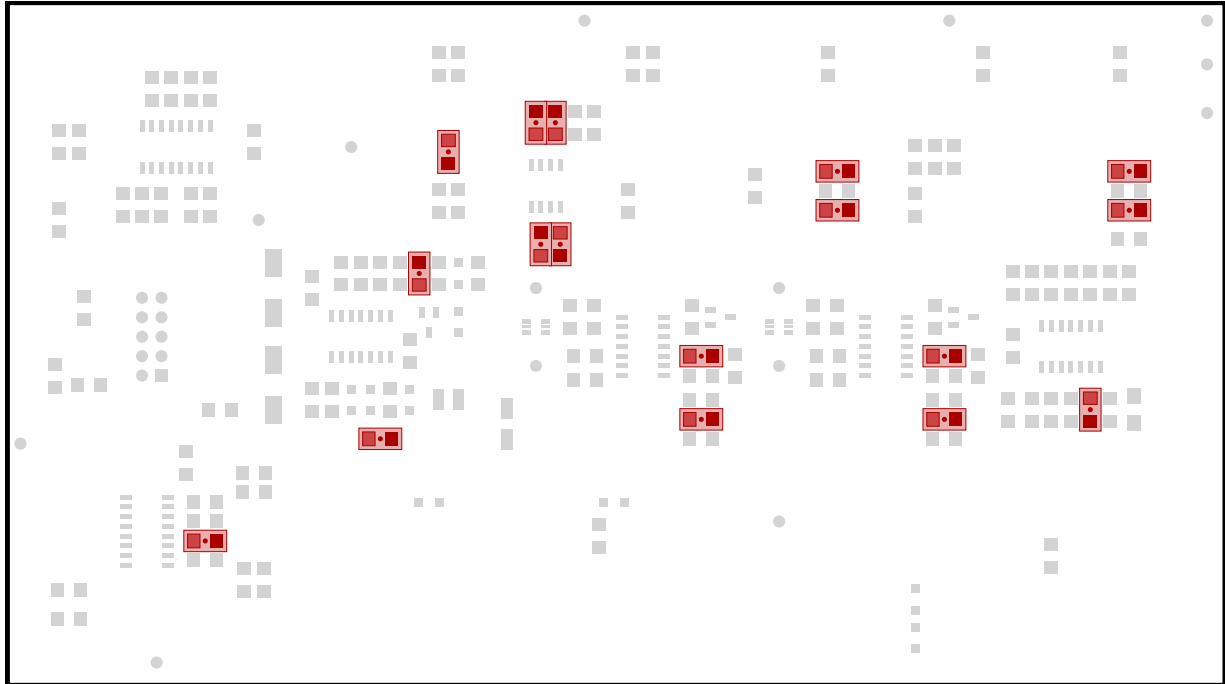
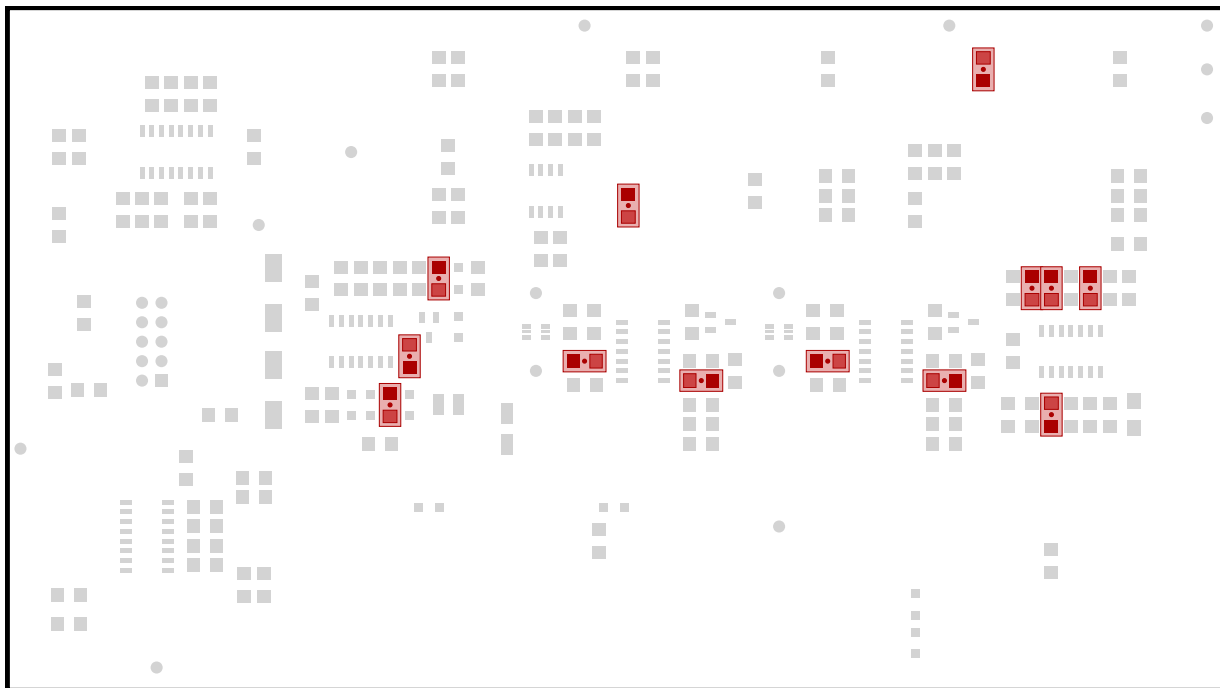


17x 100k, RES-C-1206



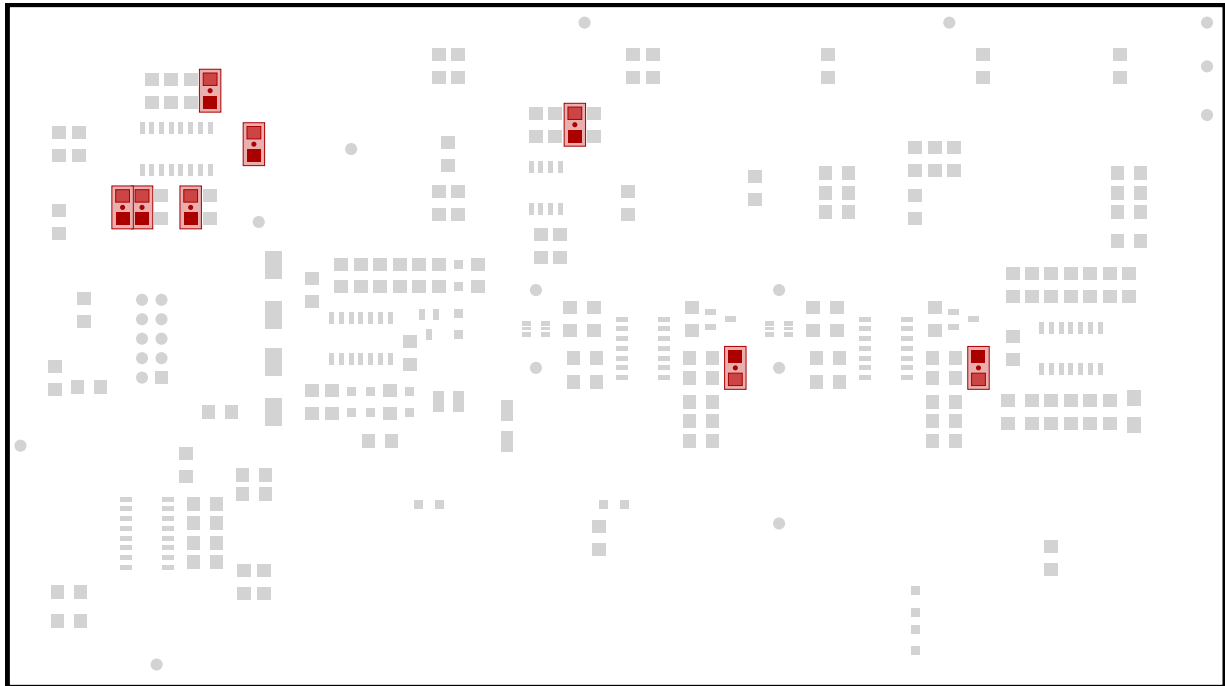
R1, R4, R12, R14, R24, R36, R54, R57, R62, R63, R68, R69, R73, R74, R79, R86, R93

# 13x 1M, RES-C-1206



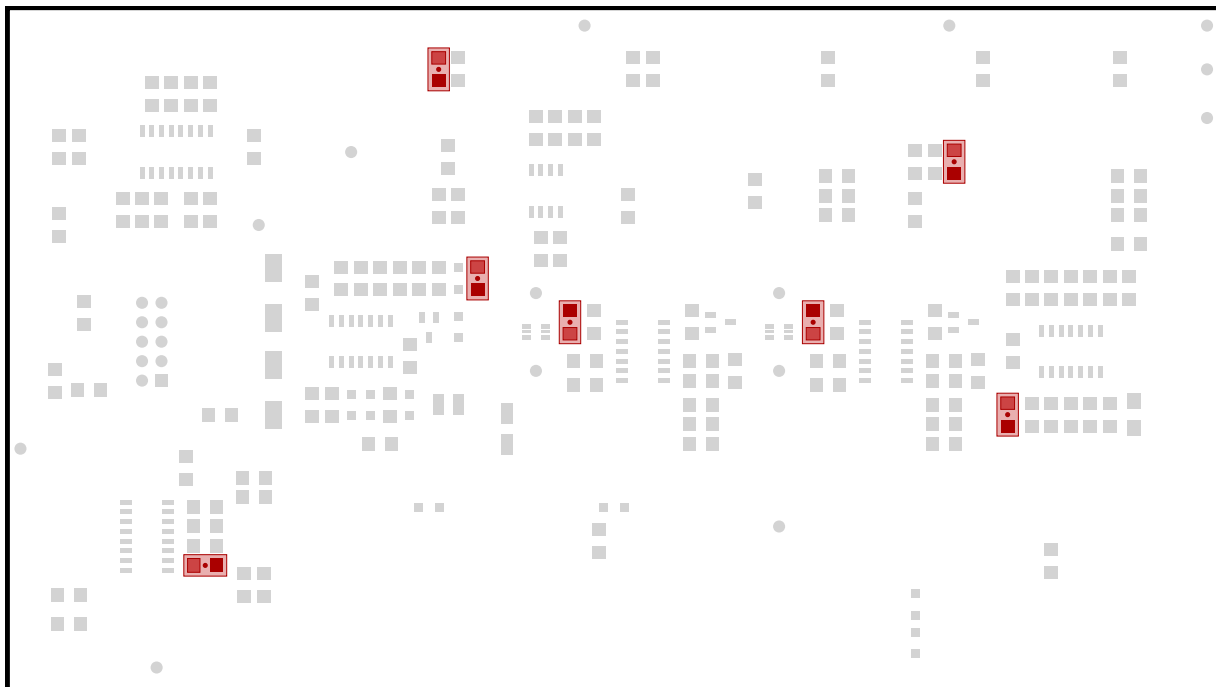
R2, R8, R9, R56, R59, R66, R67, R87, R91, R95, R96, R97, R99

8x 20k, RES-C-1206



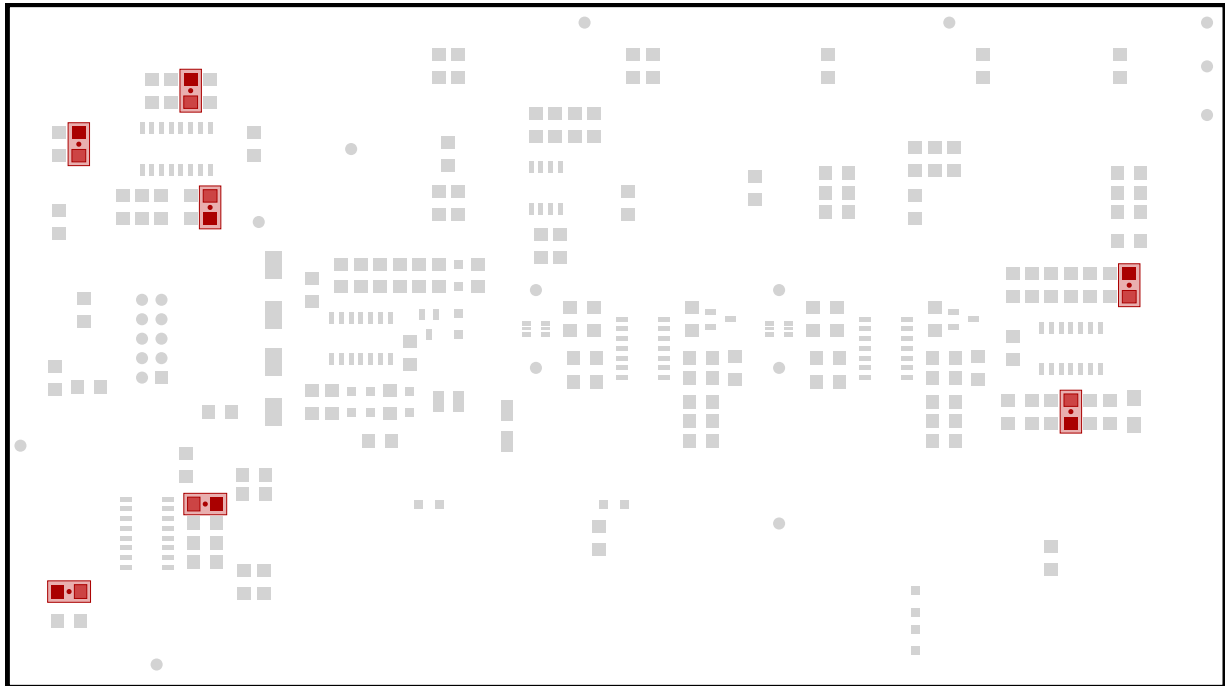
R40, R42, R43, R46, R47, R70, R72, R80

7x 10k, RES-C-1206



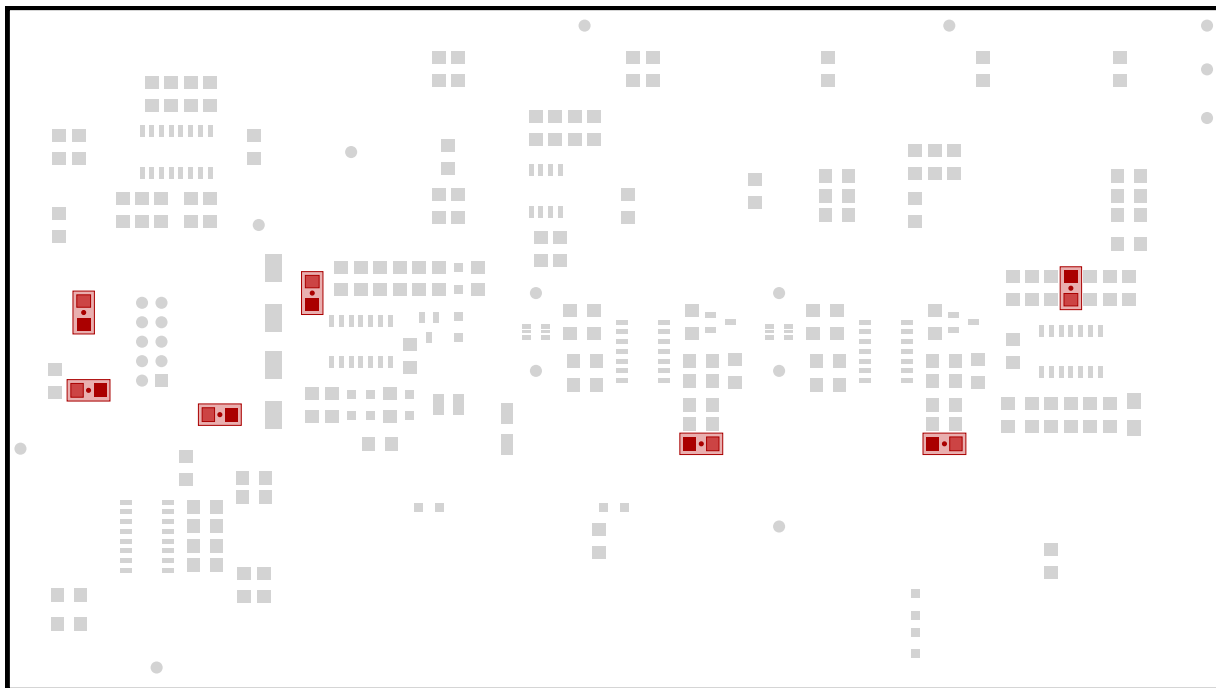
R26, R32, R64, R65, R102, R103, R199

7x 1k, RES-C-1206



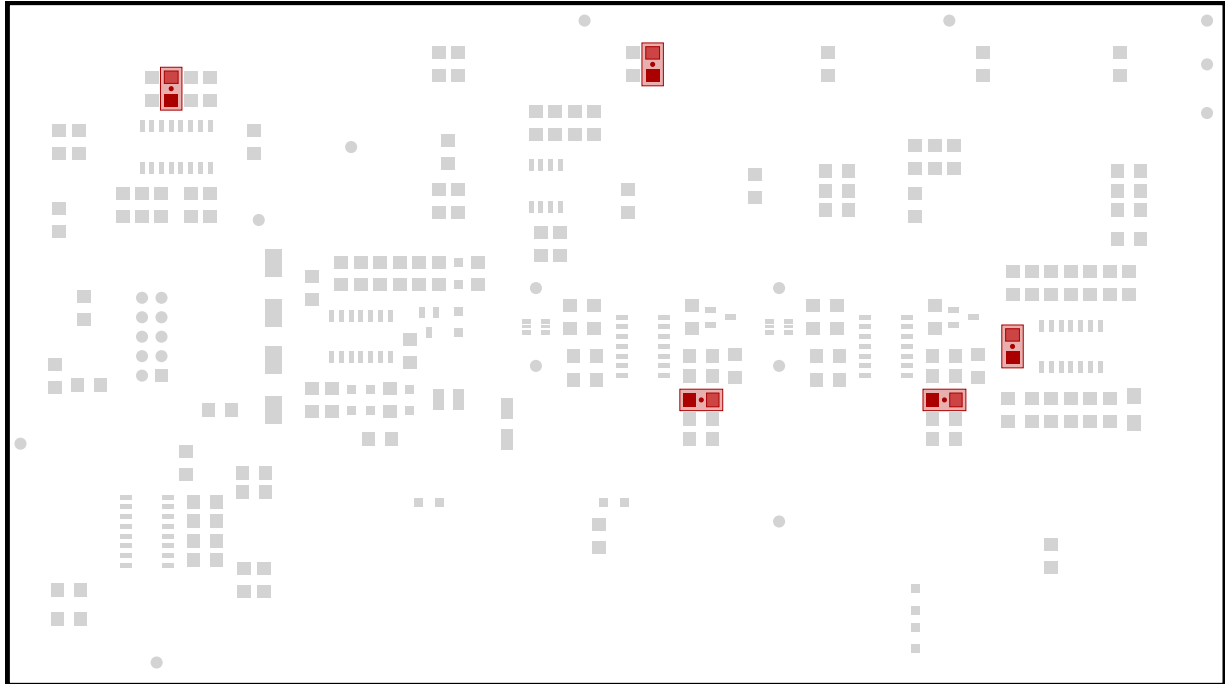
R22, R23, R34, R35, R45, R88, R98

7x 100n, CAP-C-1206



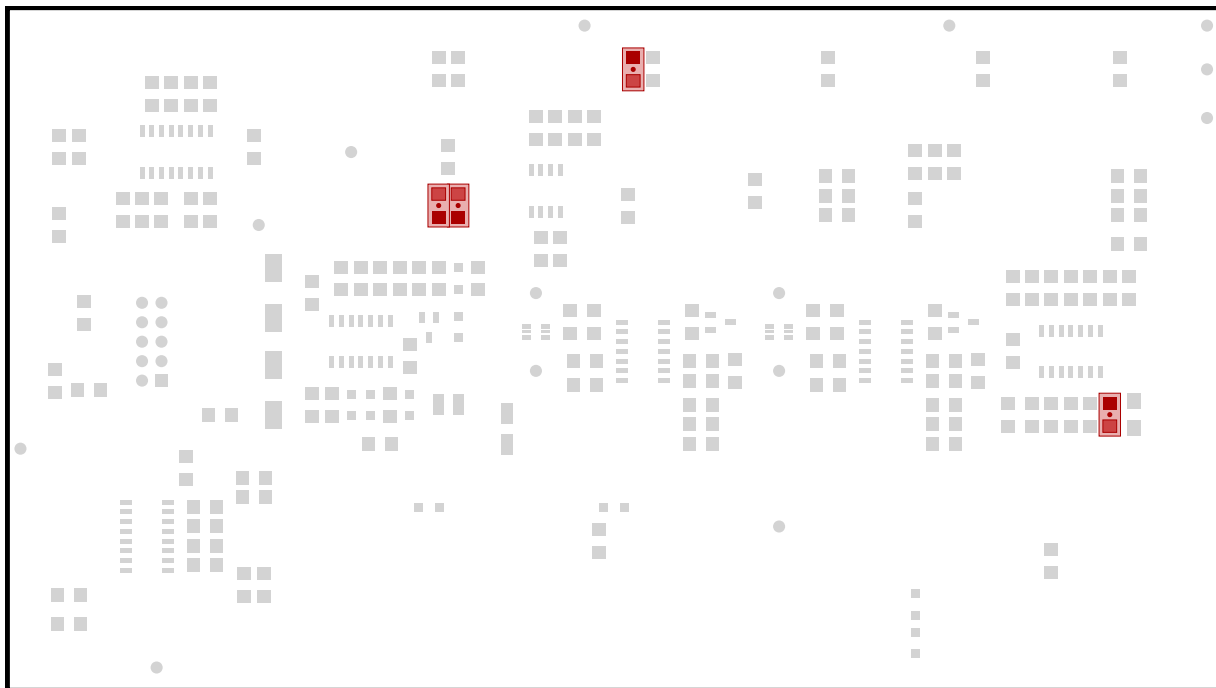
C10, C11, C15, C19, C20, C101, C102

5x 47k, RES-C-1206



R49, R75, R76, R101, R104

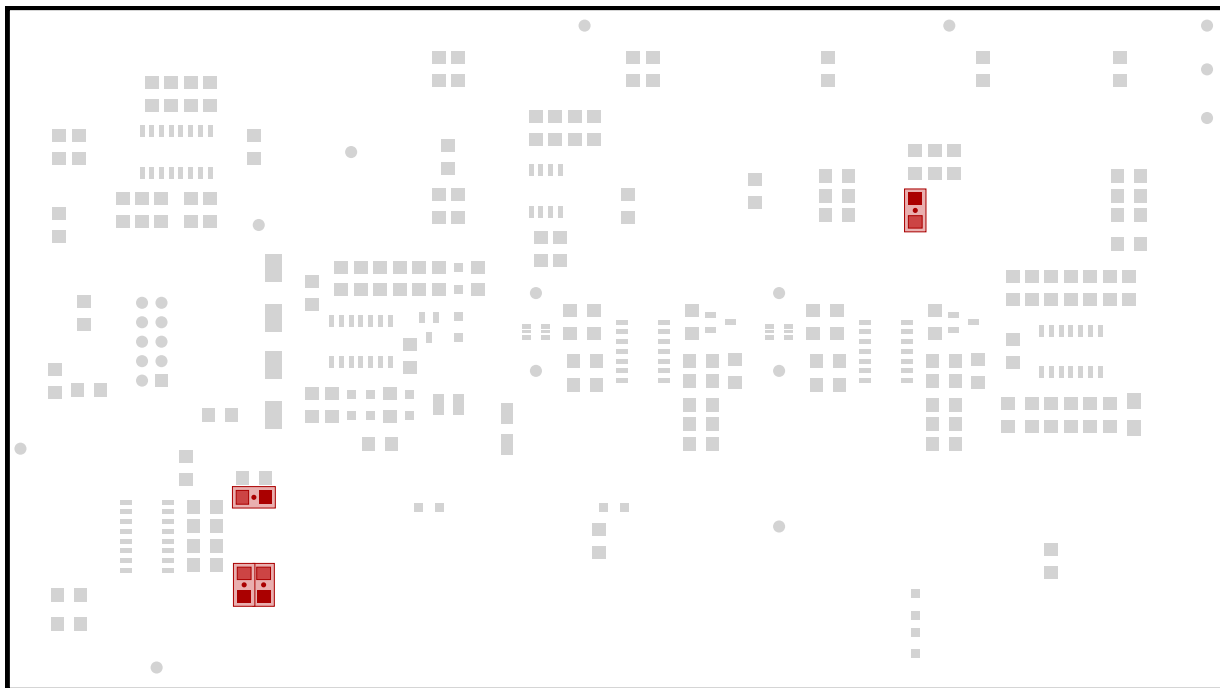
4x 200k, RES-C-1206



R28, R31, R84, R89

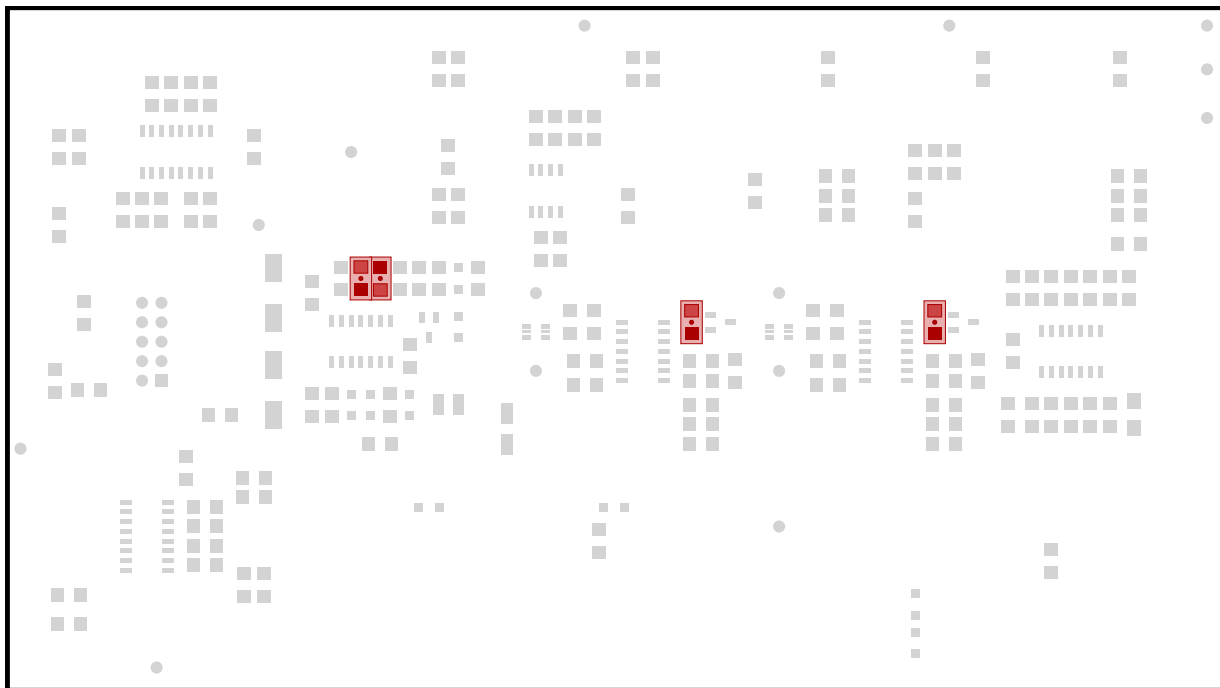


4x 470k, RES-C-1206



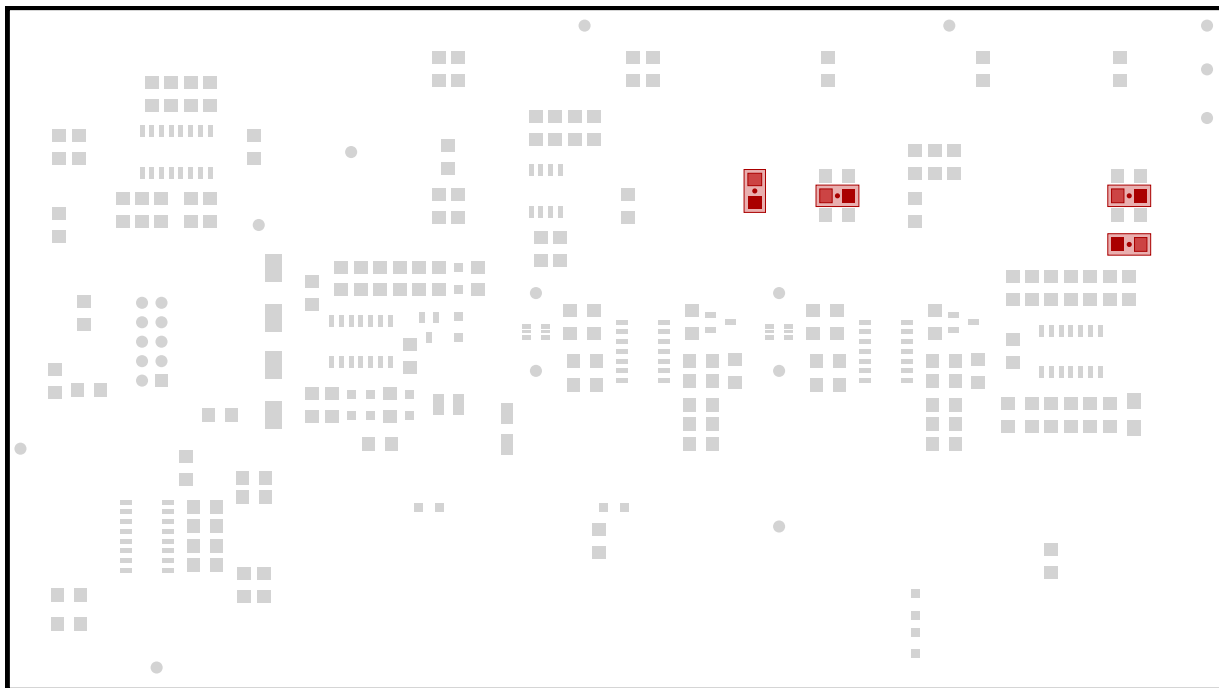
R16, R18, R20, R71

4x 1n, CAP-C-1206



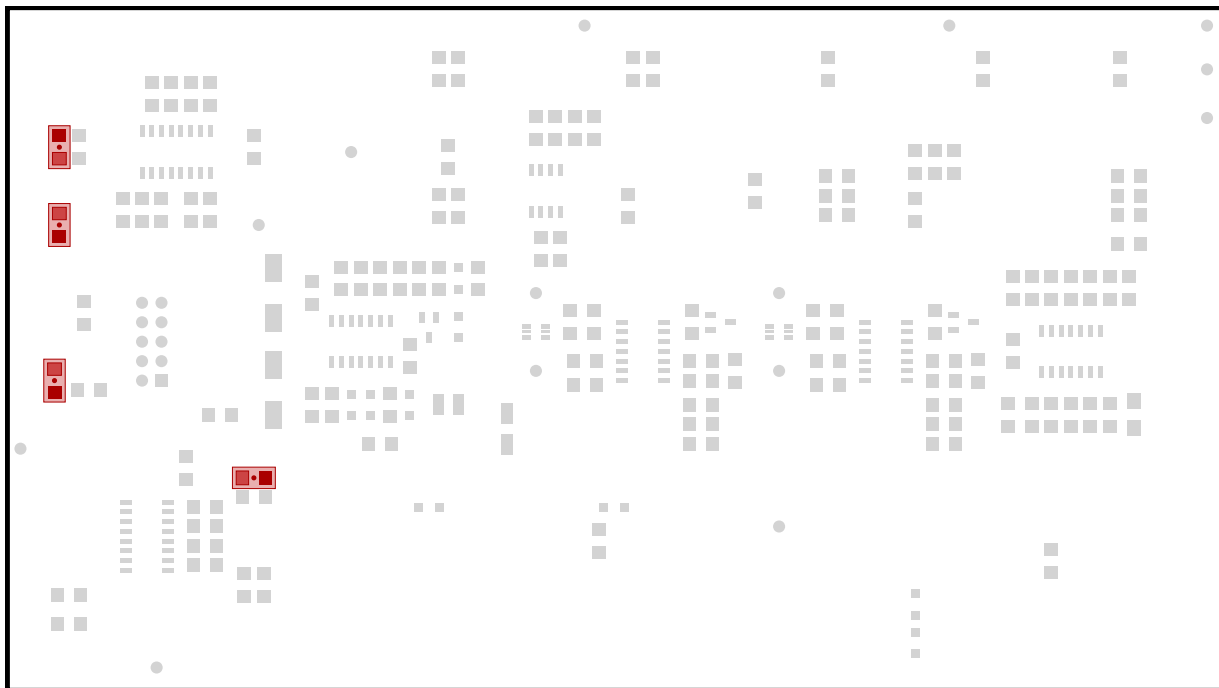
C1, C2, C8, C9

4x 220k, RES-C-1206



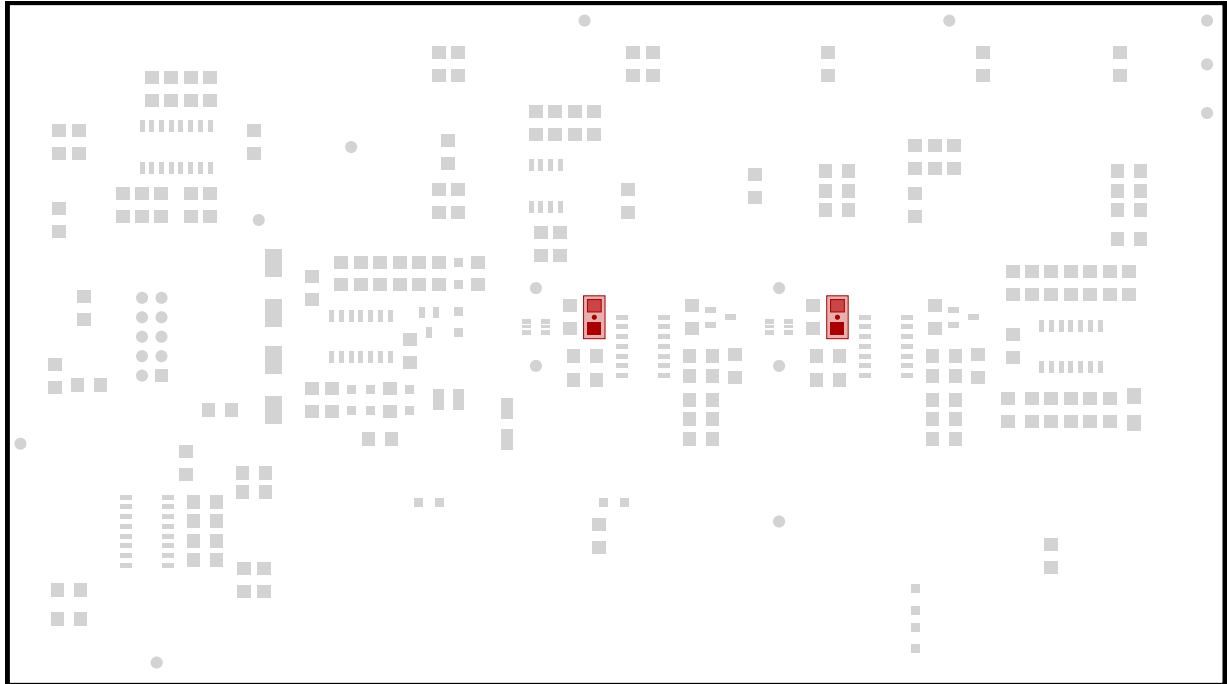
R77, R78, R82, R83

4x 150k, RES-C-1206



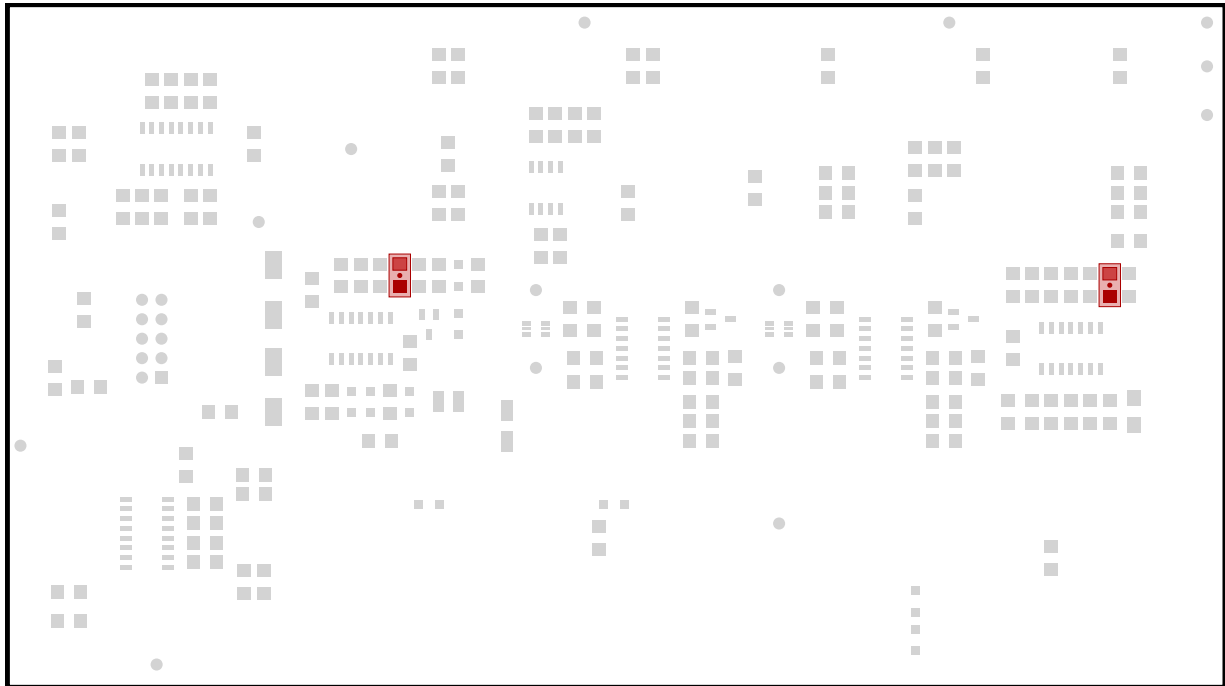
R17, R30, R33, R39

2x 100p, CAP-C-1206



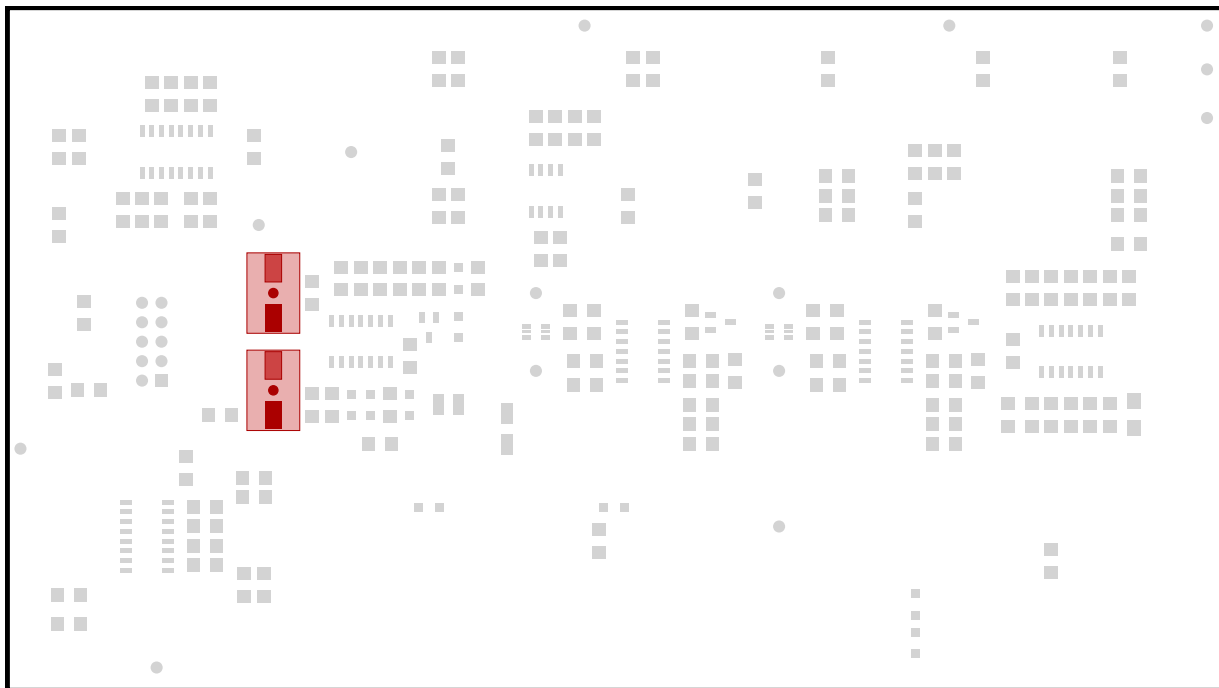
C6, C7

2x 4M7, RES-C-1206



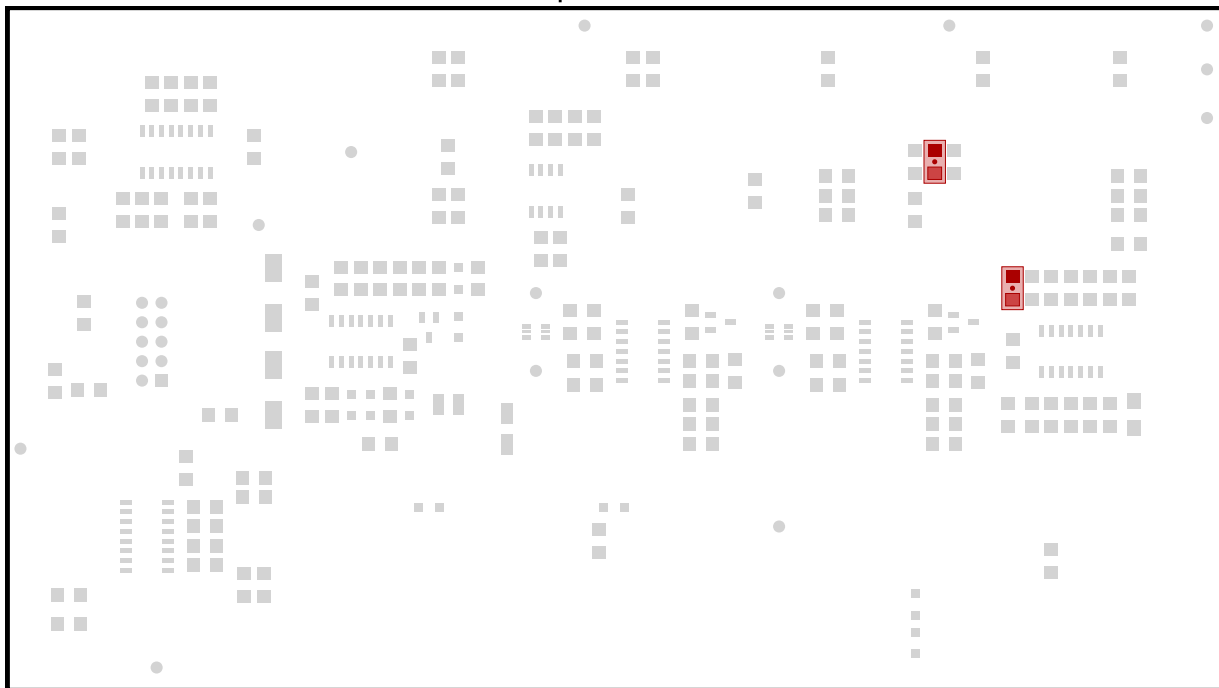
R3, R100

2x 100u, CAP-CP-D6.3-H7.7



C16, C18

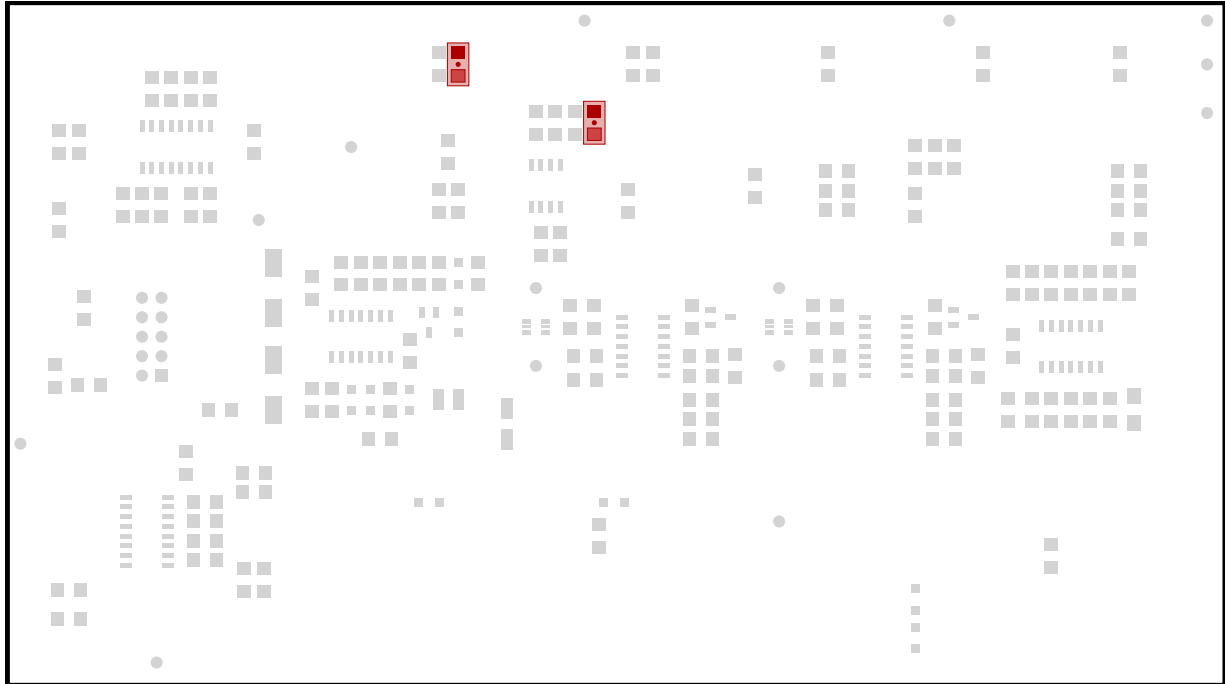
2x 330p, CAP-C-1206



C17, C21

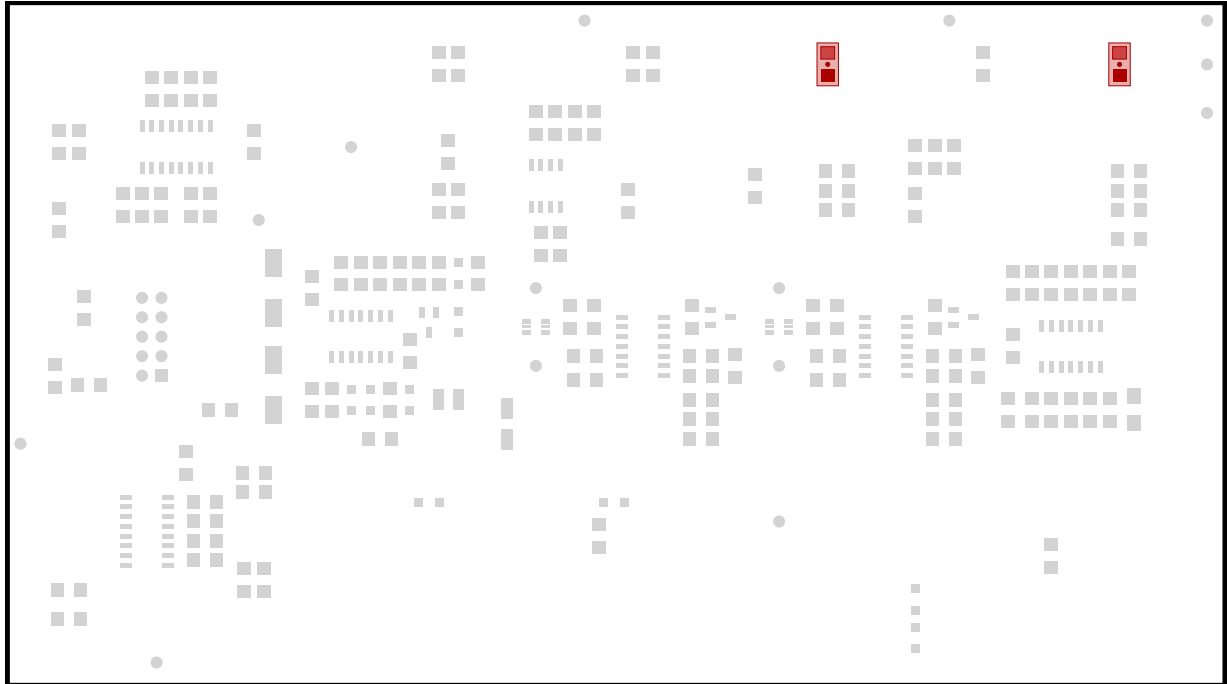


2x 4k7, RES-C-1206



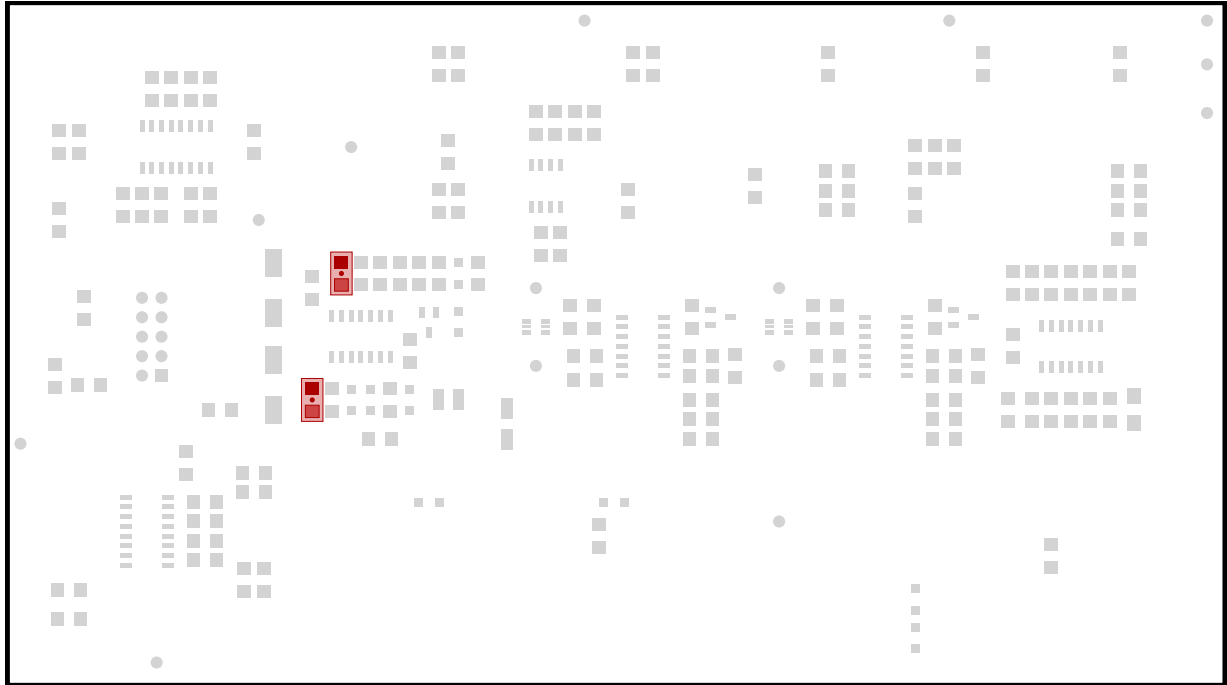
R41, R81

2x 39k, RES-C-1206



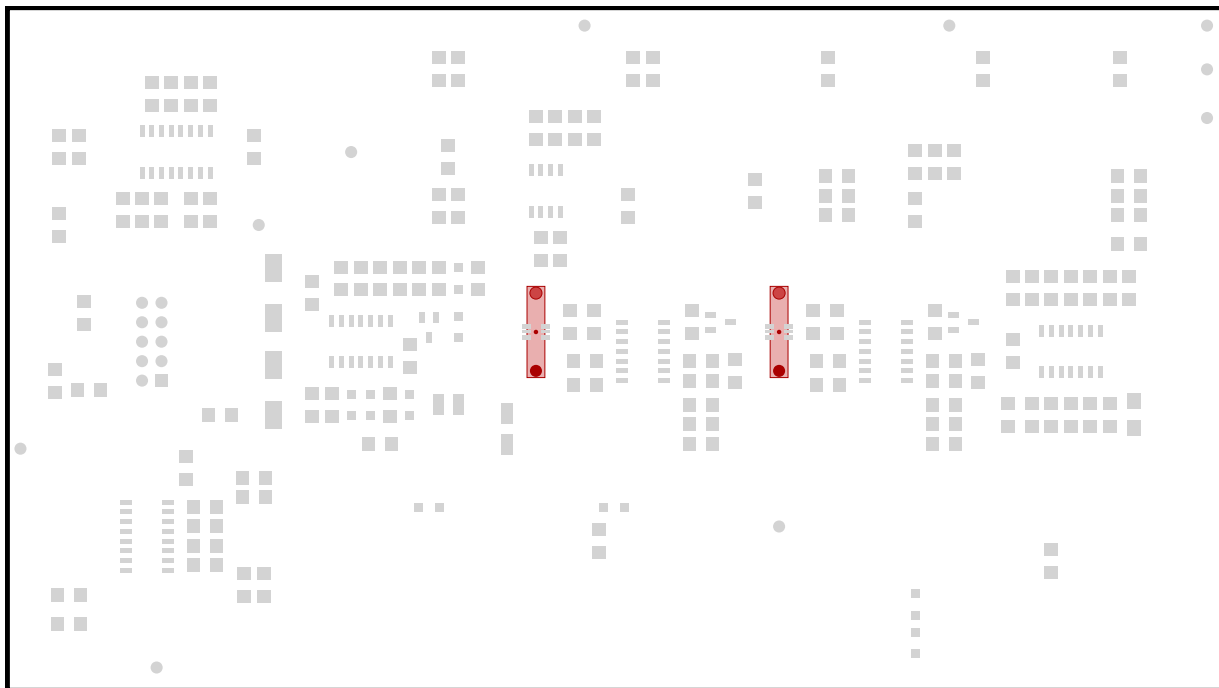
R50, R52

2x 2M, RES-C-1206



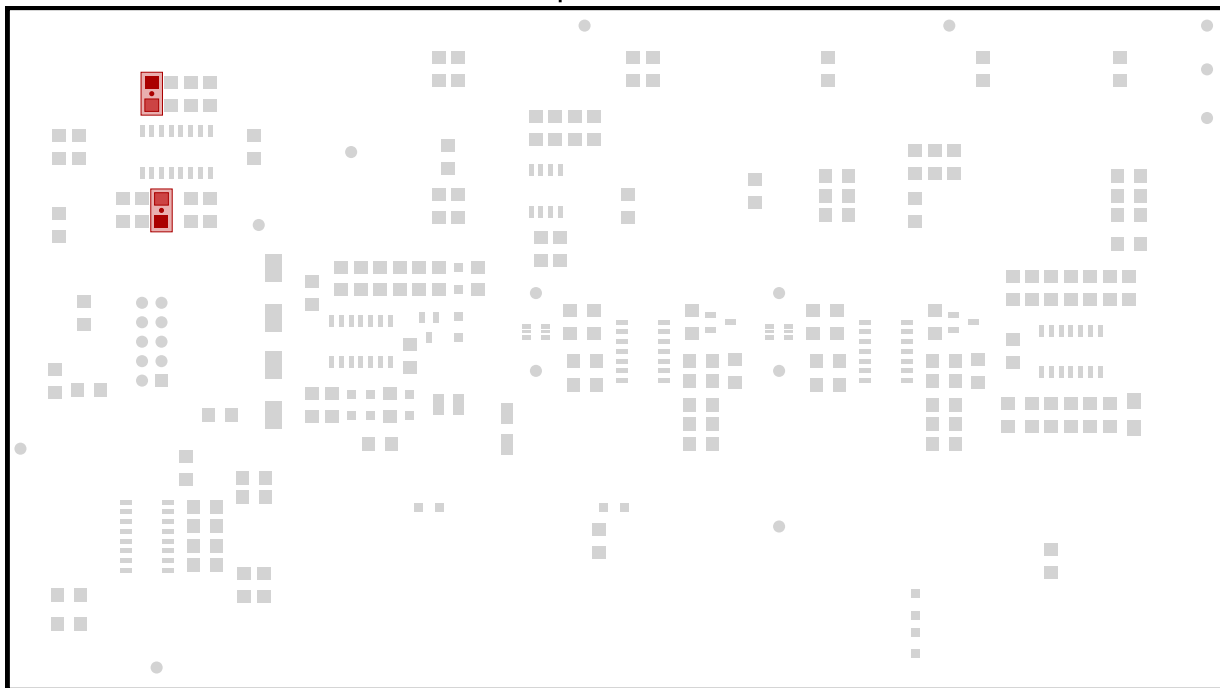
R5, R13

2x 2k, RES-AD-10.16-W0.8-L6.6-D2



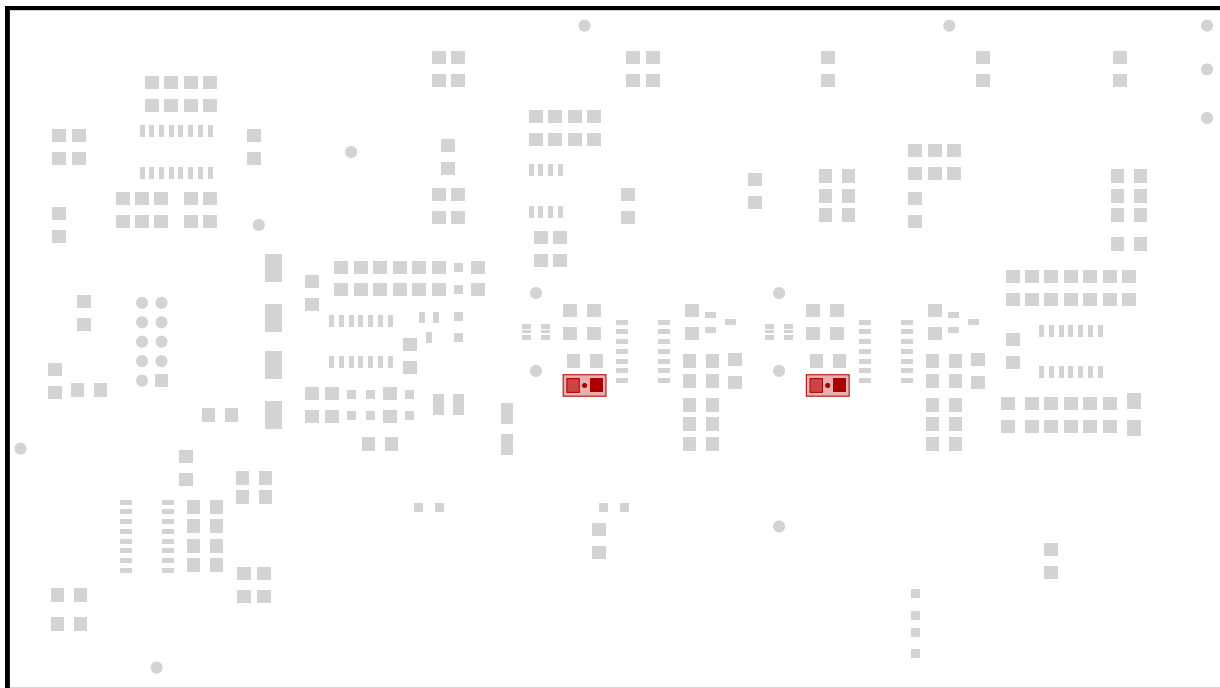
R60, R61

2x 560p, CAP-C-1206



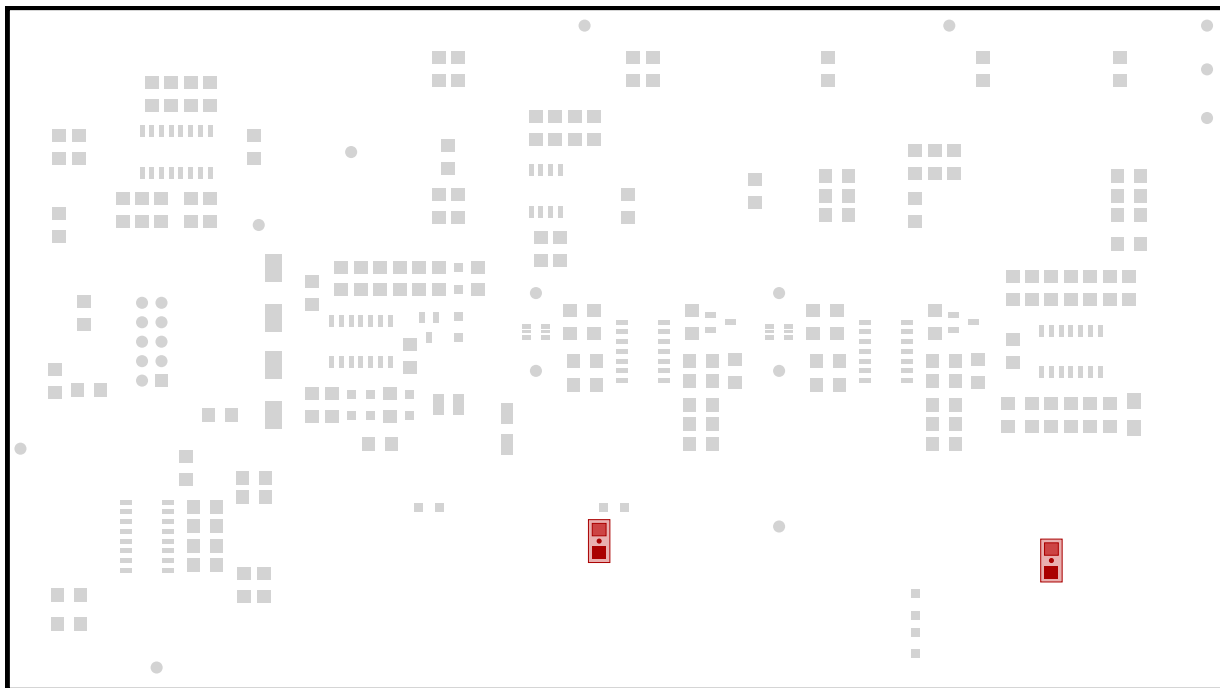
C4, C5

2x 475, RES-C-1206



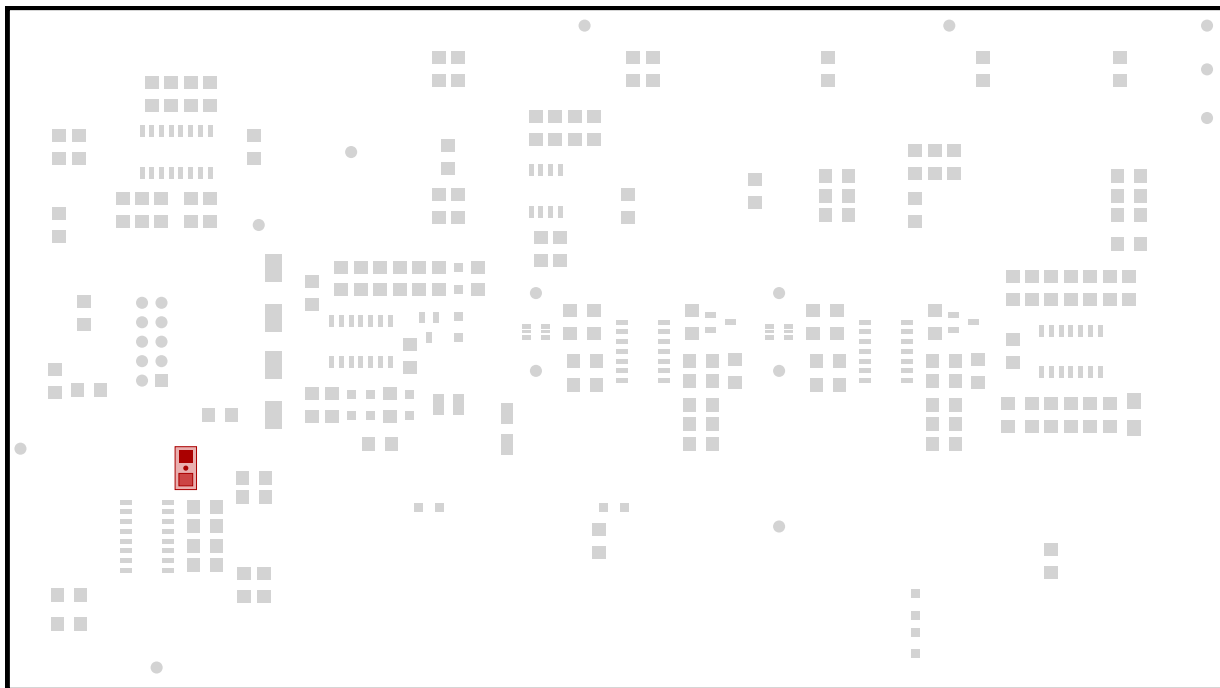
RM2, RM4

2x 510, RES-C-1206



R6, R94

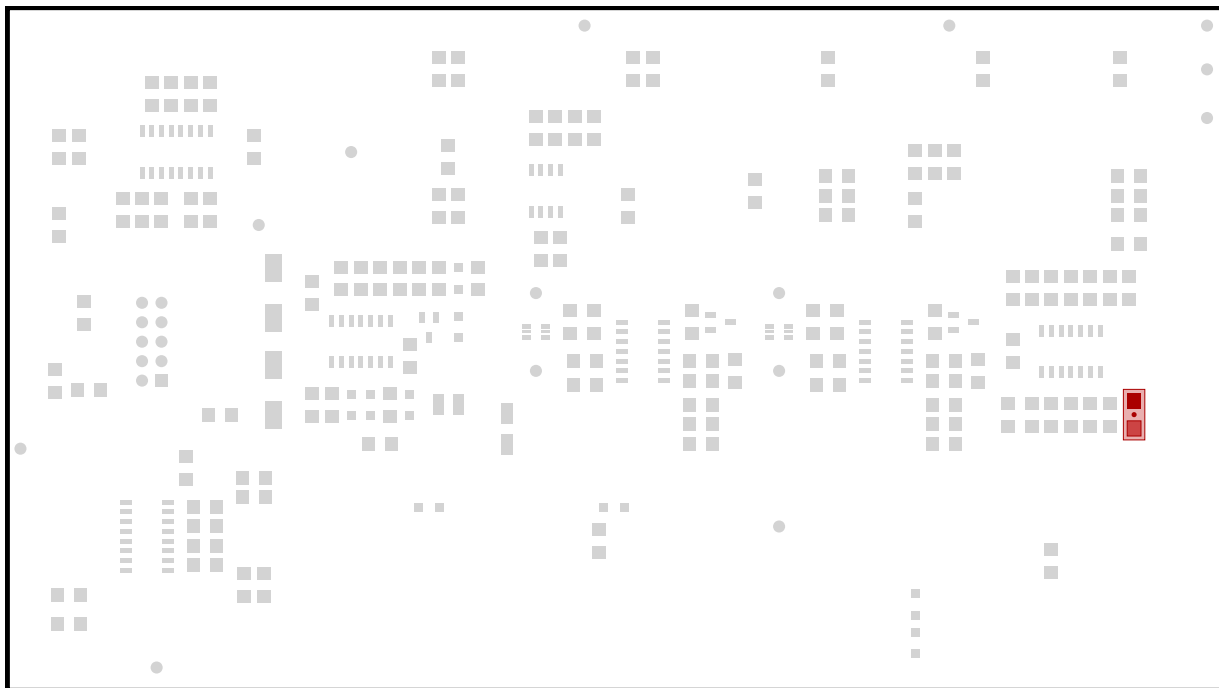
1x 33k, RES-C-1206



R21

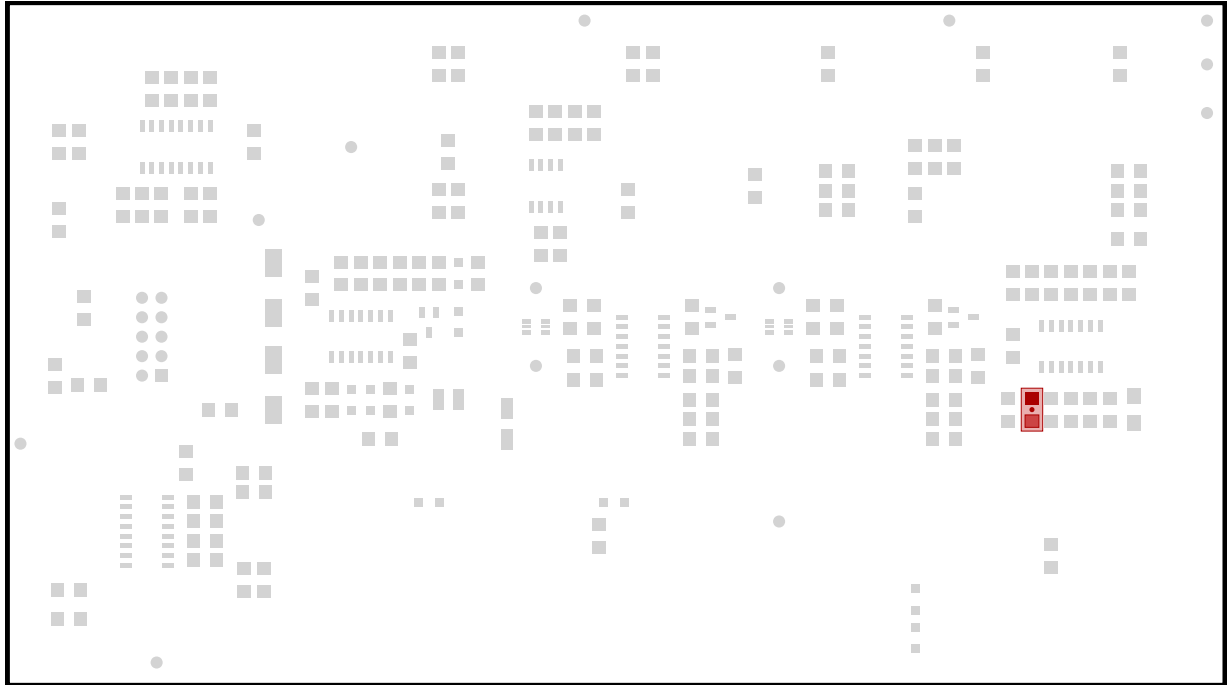


1x 2u, CAP-C-1206-H1.8



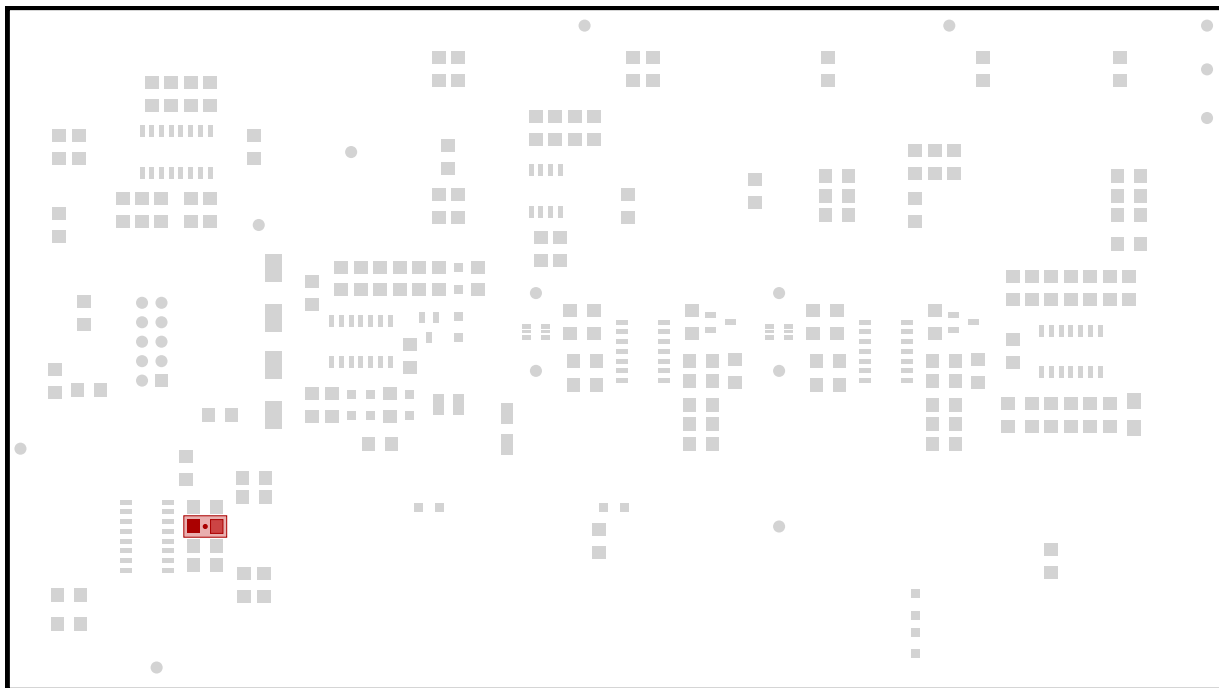
C13

1x 4n7, CAP-C-1206



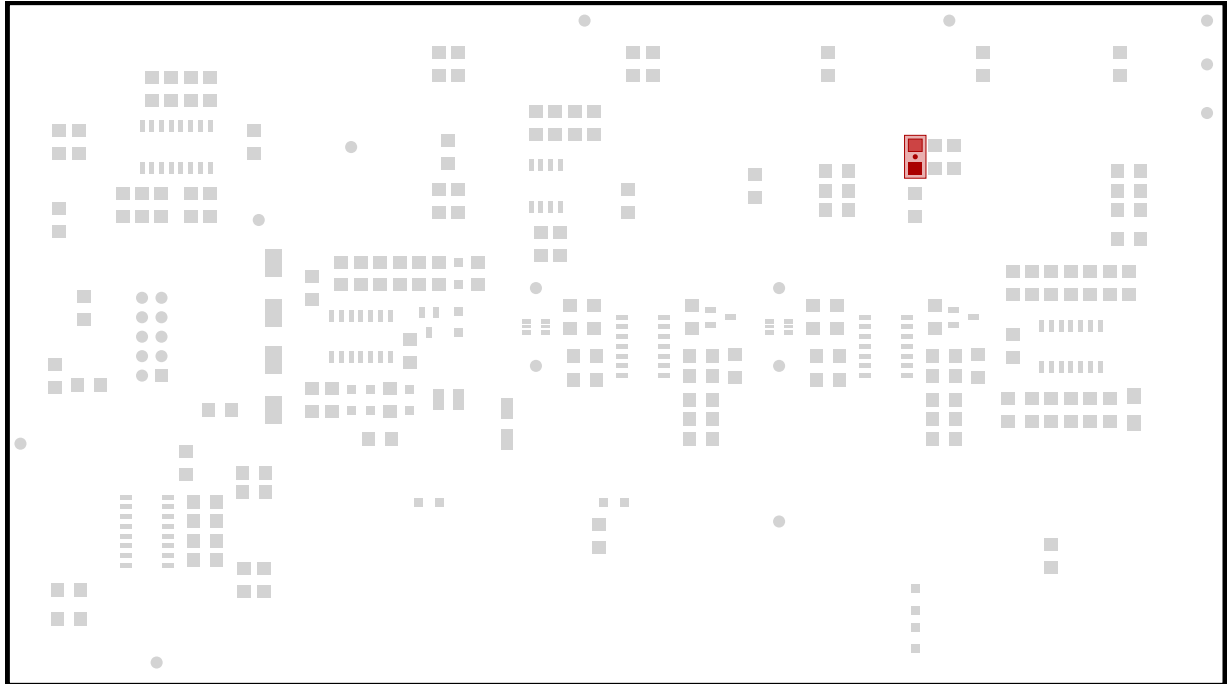
C14

1x 620k, RES-C-1206



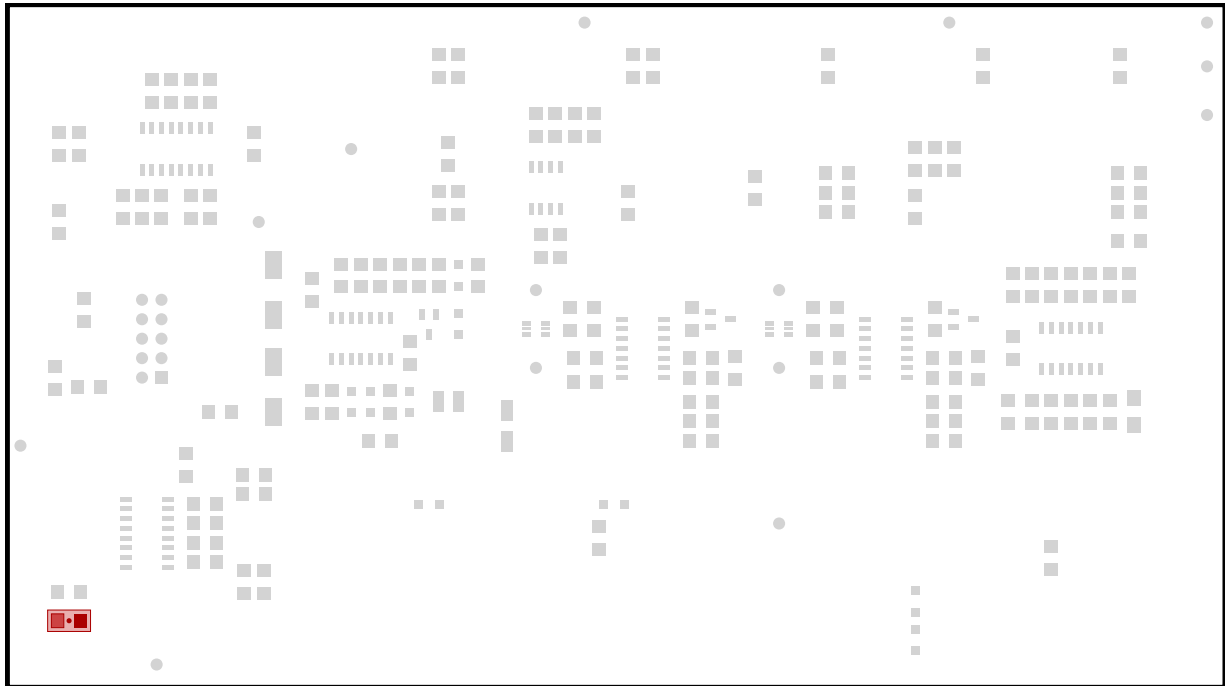
R25

1x 10n, CAP-C-1206



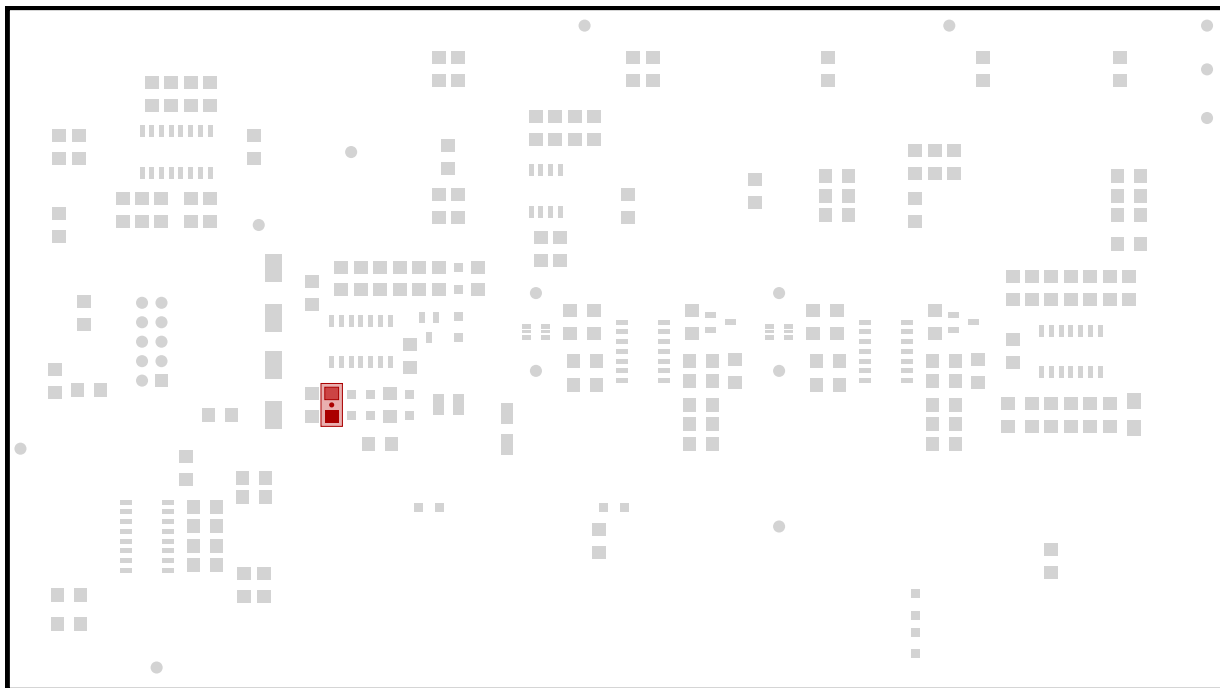
C12

1x 1u, CAP-C-1206



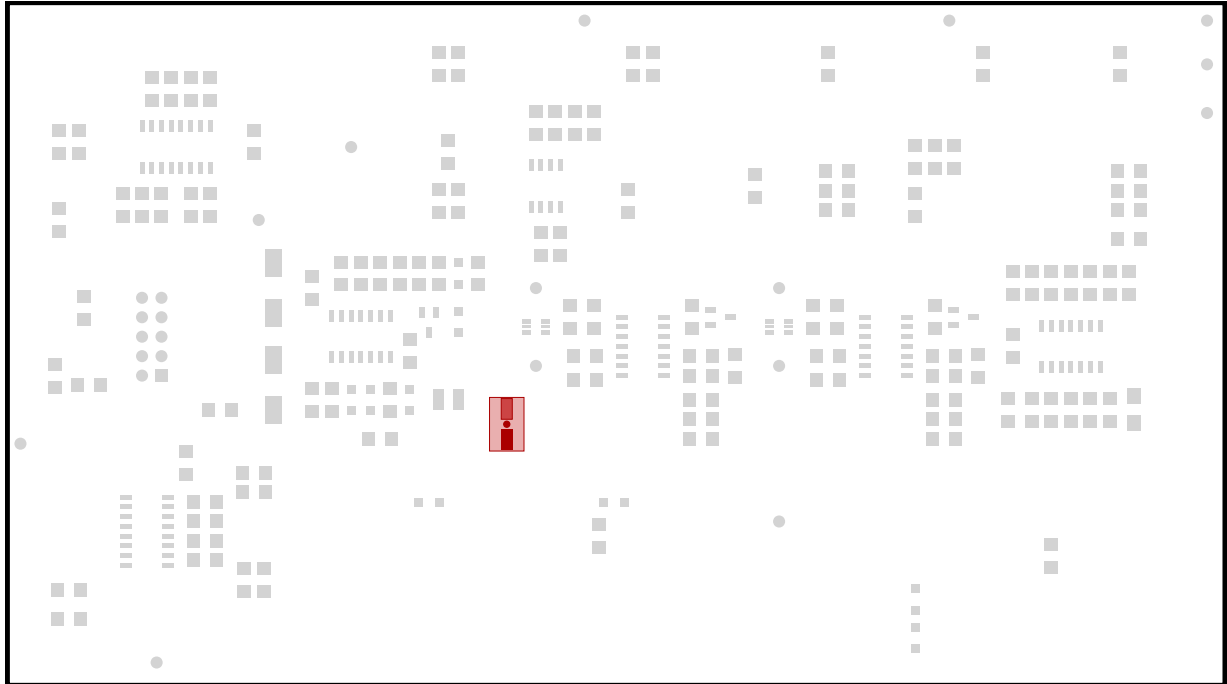
C22

1x 3M, RES-C-1206



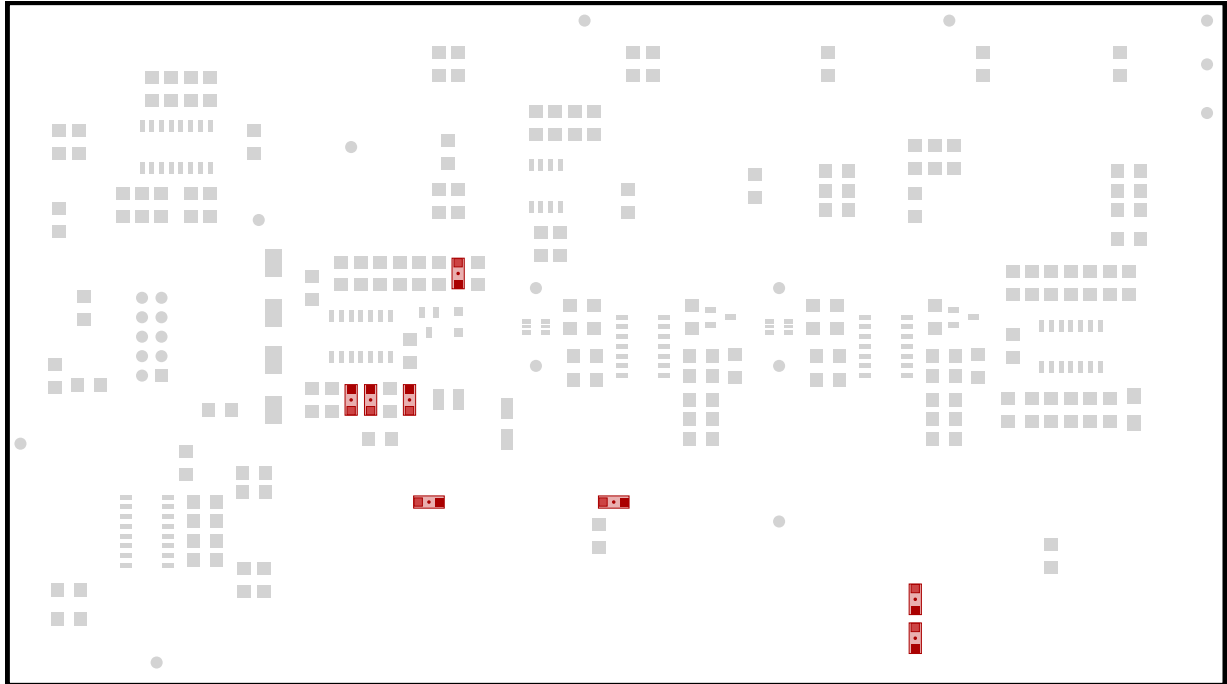
R7

1x 2u, CAP-CP-D4-H5.4



C3

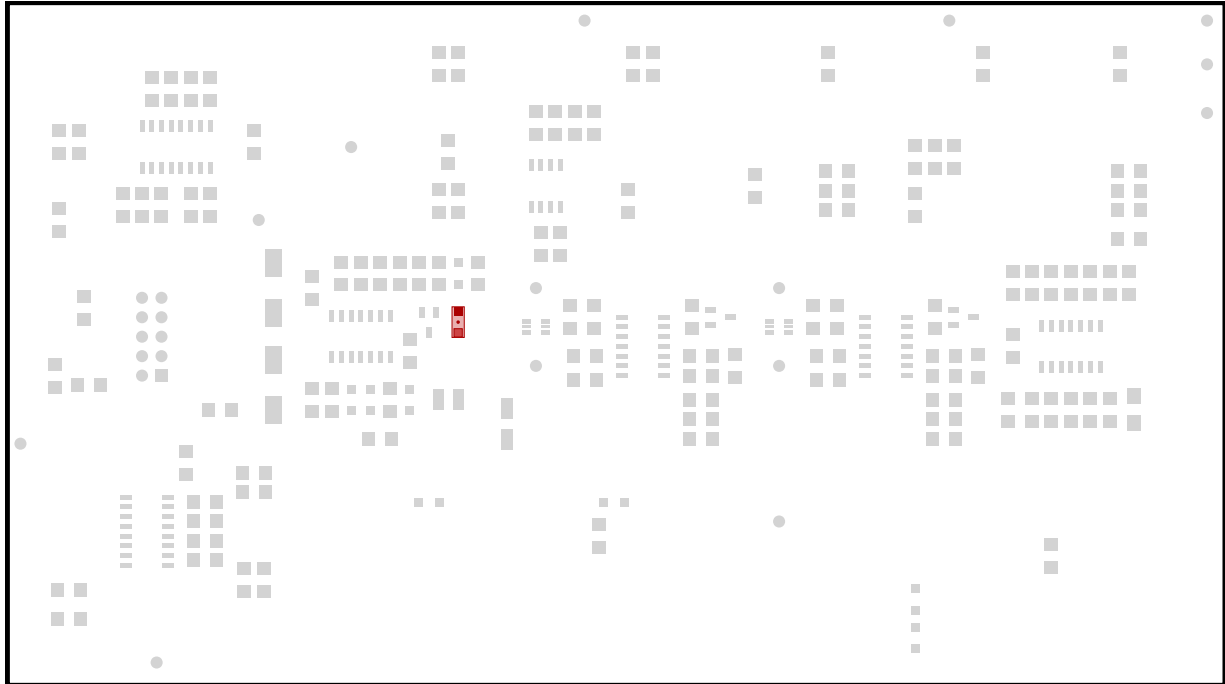
8x 1N4148, SOD-323F



D1, D2, D3, D4, D5, D7, D9, D10

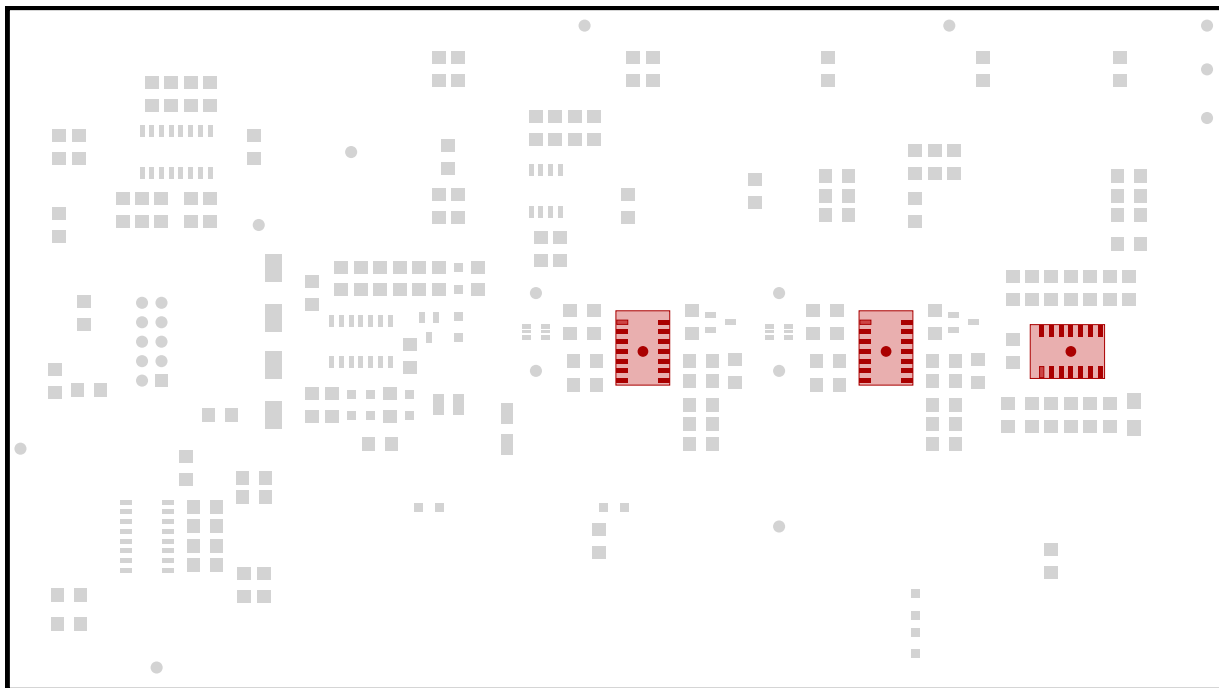


1x 9v1, SOD-323F



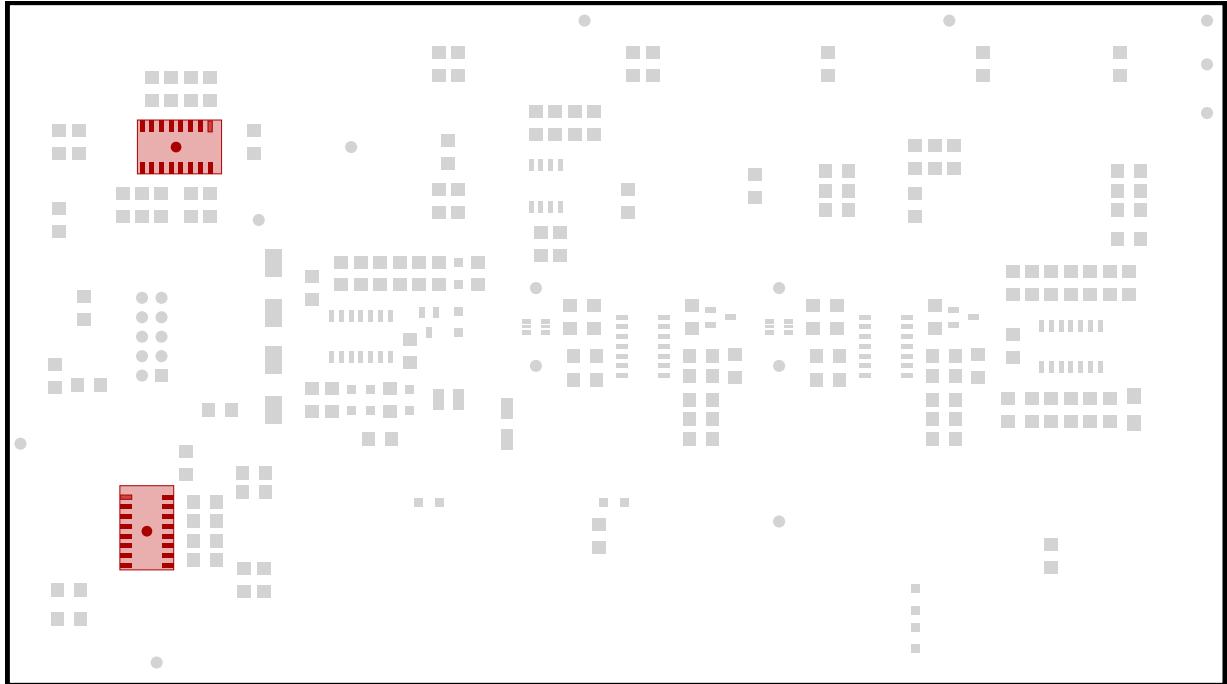
D8

3x TL074, SOIC-14-N-3.90



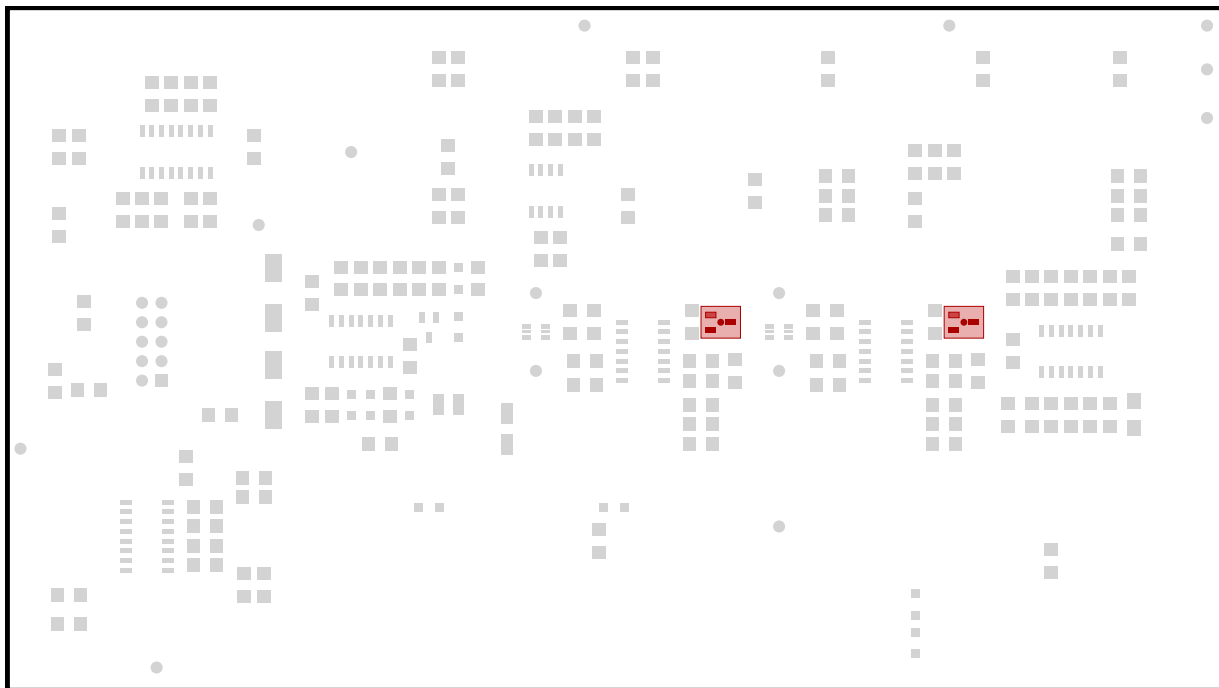
U5, U6, U7

2x LM13700, SOIC-16-N-3.90



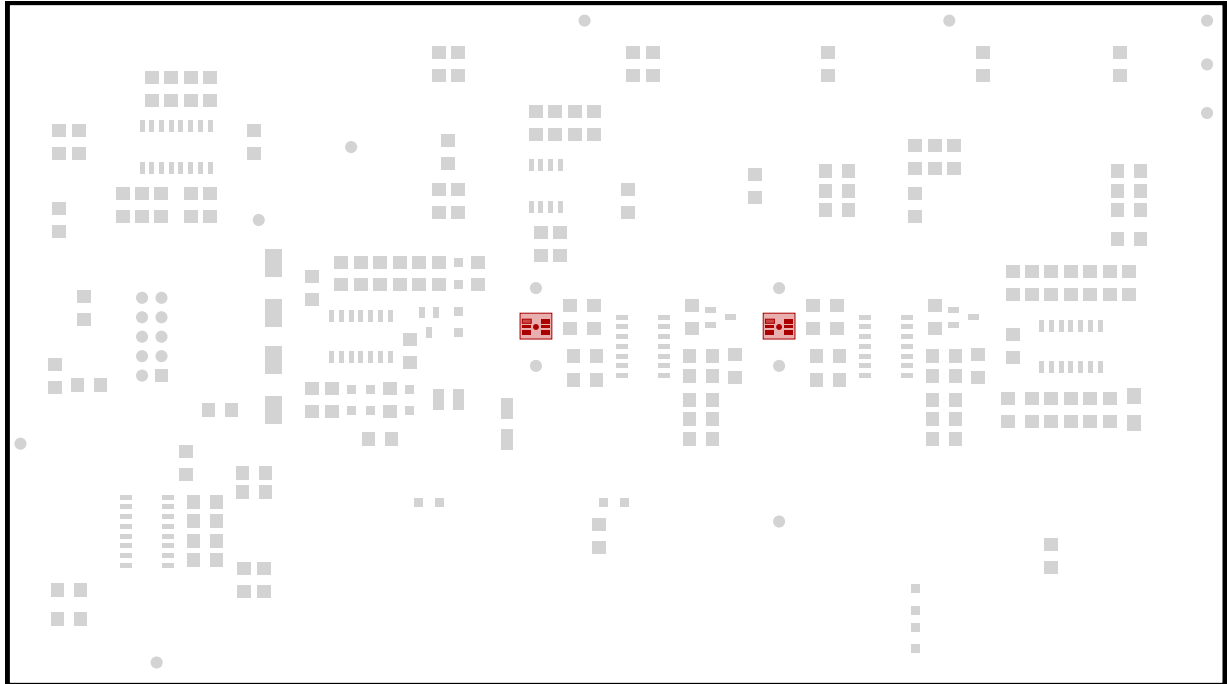
U3, U4

2x BF545C, SOT-23-HS



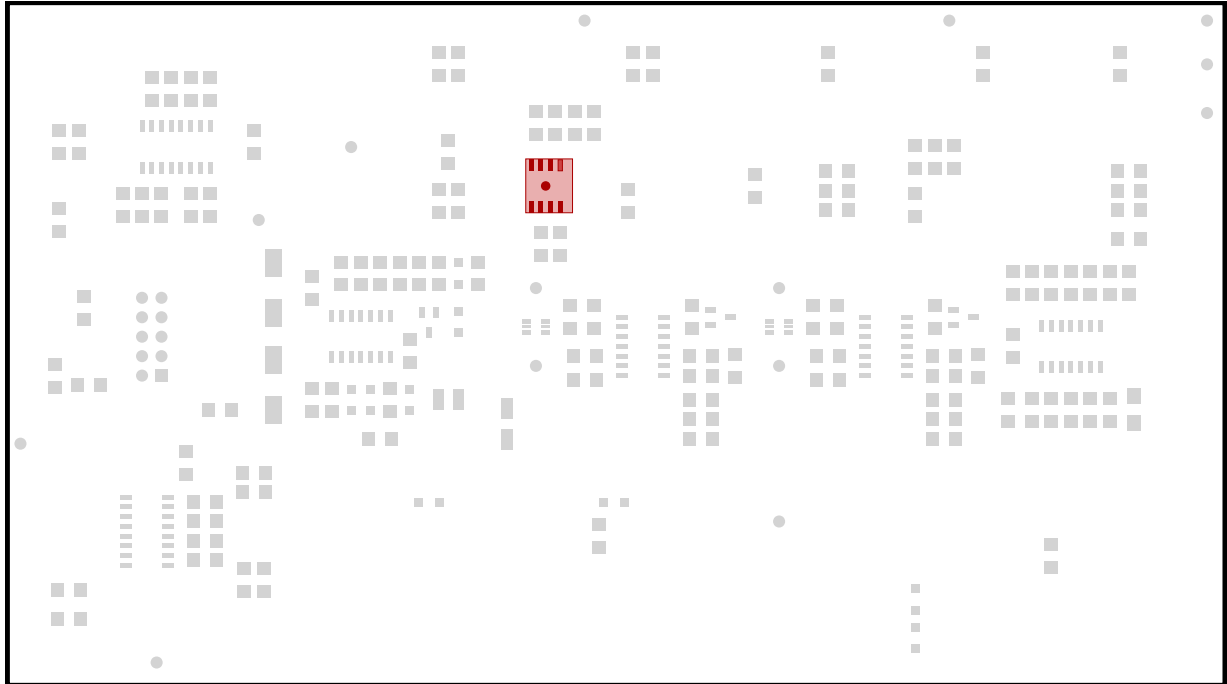
Q5, Q6

2x BC847BS, SOT-363



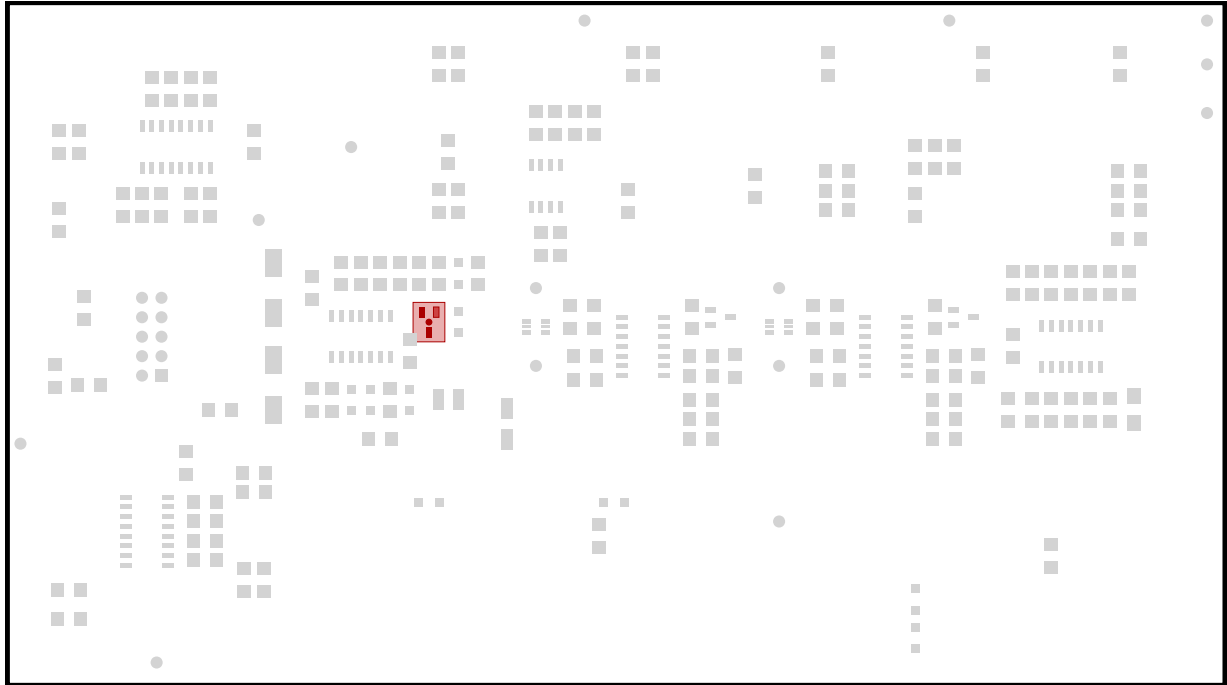
Q1, Q2

1x TL072, SOIC-8-N-3.90



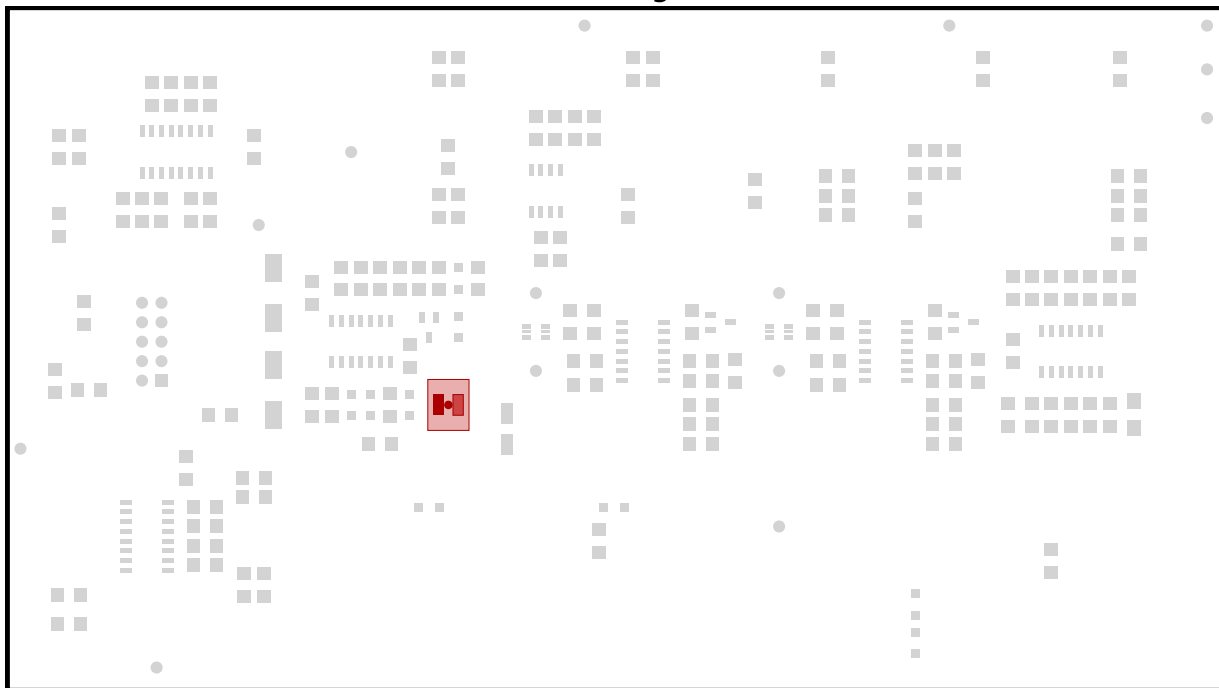
U2

1x BC847, SOT-23-HS



Q8

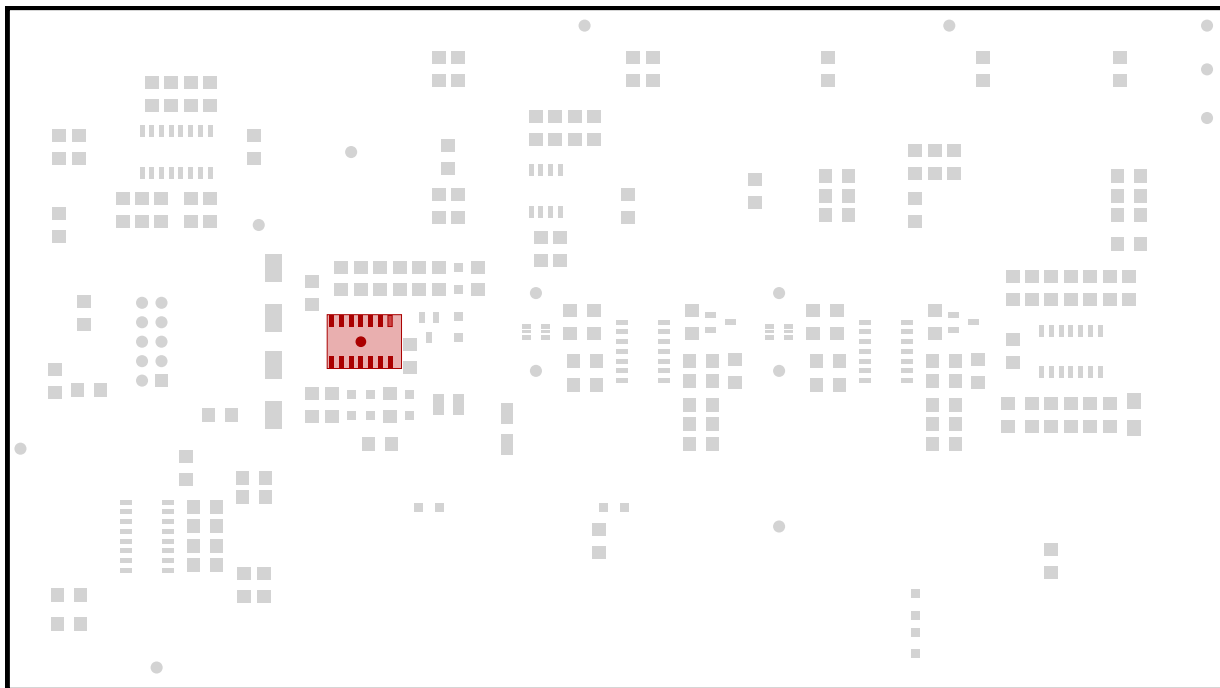
1x Manual Gate/Trig, PINHEAD1-2



S1

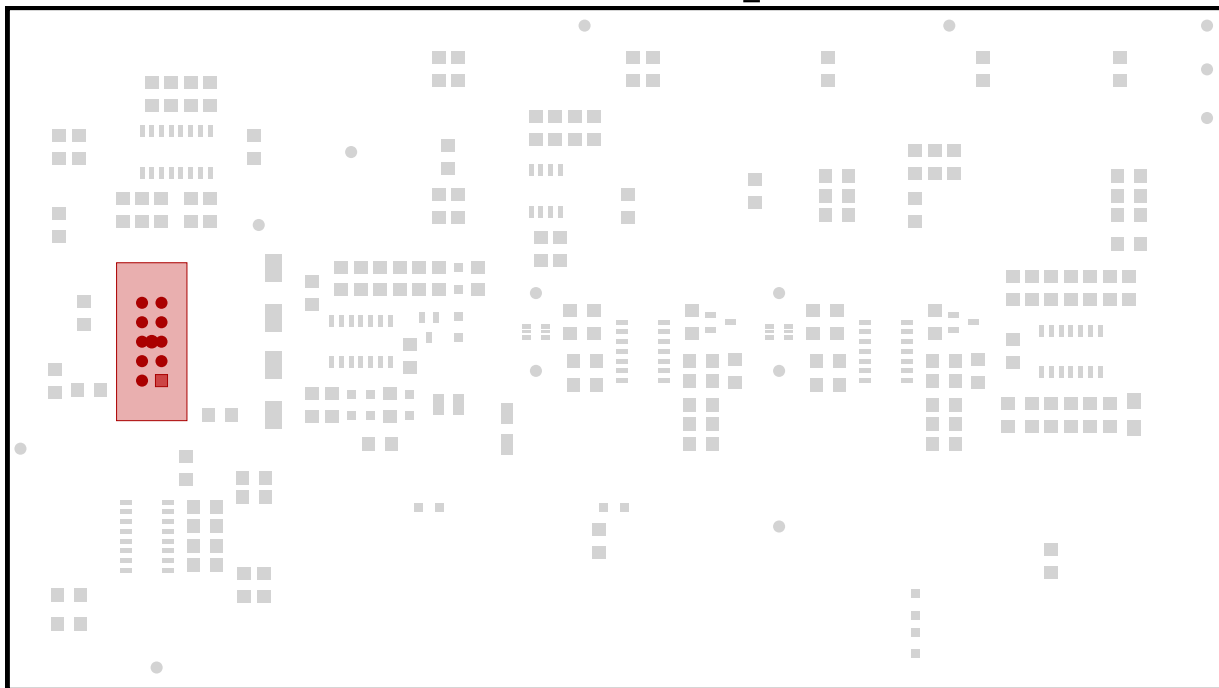


1x 40106, SOIC-14-N-3.90



U1

# 1x Euro Power, HE10\_10D



K101