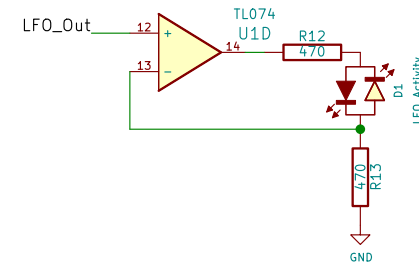
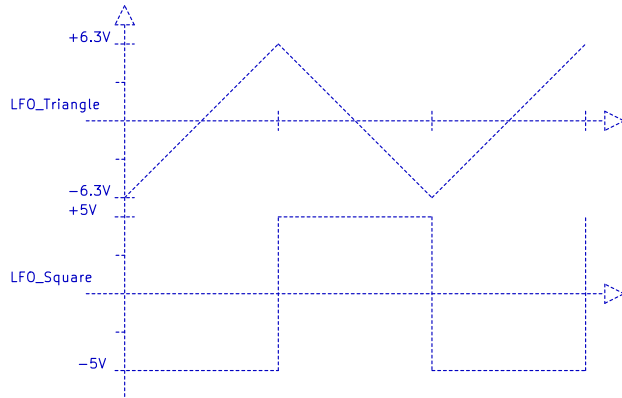
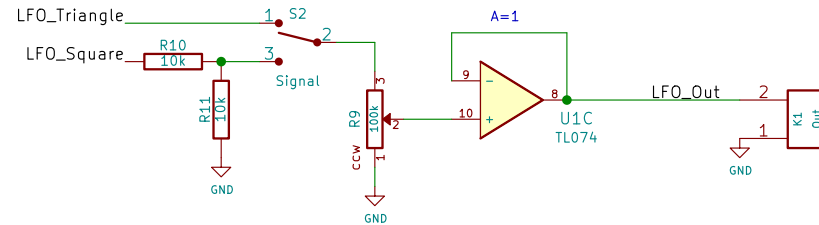
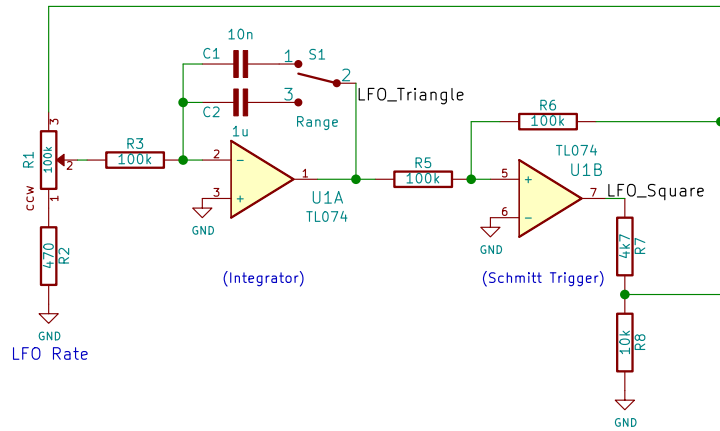
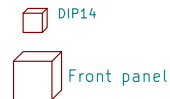
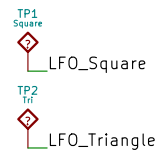
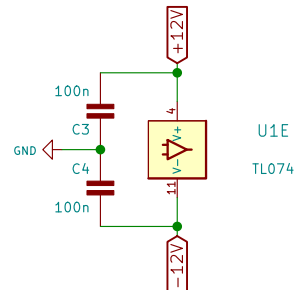
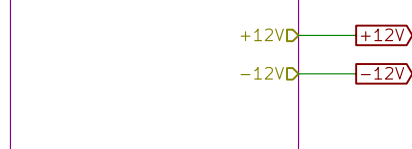


Powered at -12/+12 V, maximum output will swing between approx.:

- * -6.3/+6.3 V for Triangle waveform
- * -5/+5 V for Square waveform



Sheet: Eurorack Power Interface



Revision history:

- 1.5
 - * Simplification: R4 removed
 - * Output Normalization: Square waveform reduced by half
- 1.4
 - * U1D reversed

<http://www.davidhailant.com>

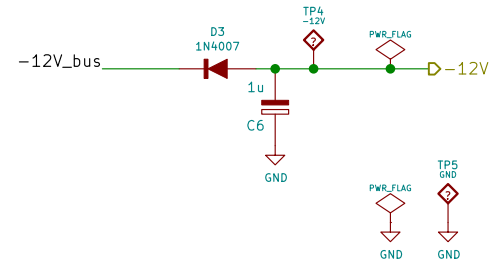
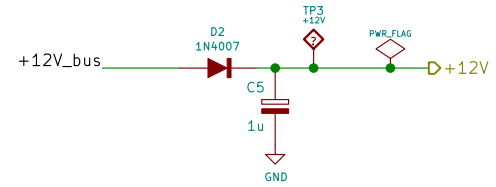
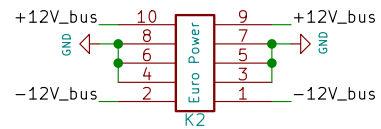
David Hailant

Sheet: /
File: lfo.sch

Title: Simple LFO

Size: A4 Date: 2020-08-20
KiCad E.D.A. kicad 5.1.9-73d0e3b20d88ubuntu20.04.1

Rev: 1.5
Id: 1/2



<http://www.davidhailant.com>

David Hailant

Sheet: /Eurorack Power Interface/

File: euro_power_10.sch

Title: Simple LFO

Size: A4

Date: 2020-08-20

Rev: 1.5

KiCad E.D.A. kicad 5.1.9-73d0e3b20d88ubuntu20.04.1

Id: 2/2