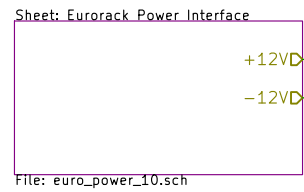
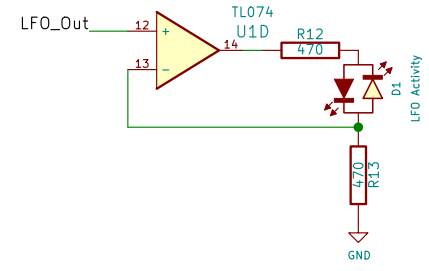
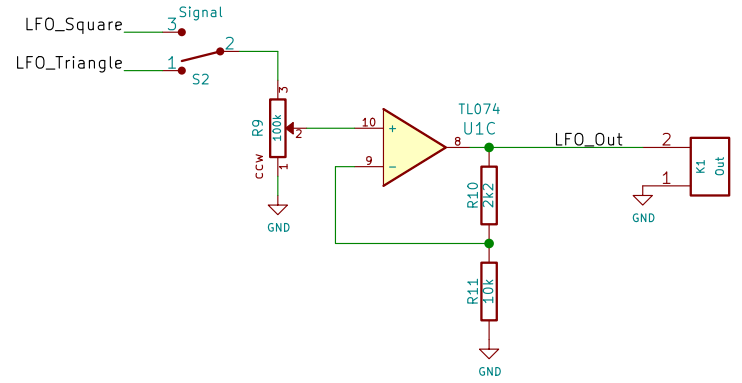
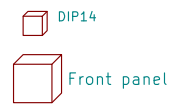
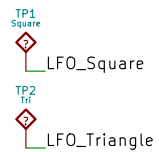
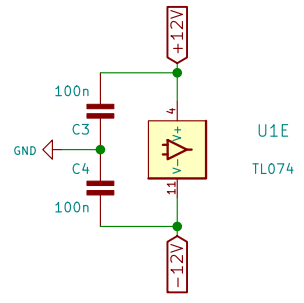


Powered at -12/+12 V, maximum output will swing between approx. -10/+10 V

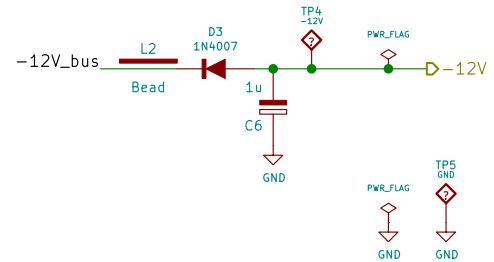
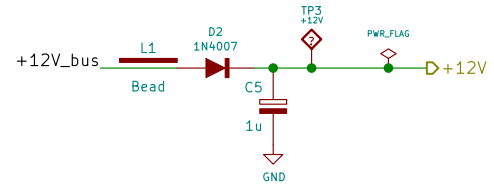
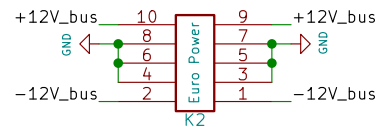


File: euro_power_10.sch



Revision history:
1.4 * U1D reversed

http://www.davidhailant.com	
David Hailant	
Sheet: /	
File: lfo.sch	
Title: Simple LFO	
Size: A4	Date: 2019-11-03
KiCad E.D.A. kicad (5.1.4)-1	Rev: 1.4
	Id: 1/2



<http://www.davidhailant.com>

David Hailant

Sheet: /Eurorack Power Interface/

File: euro_power_10.sch

Title: Simple LFO

Size: A4 Date: 2019-11-03

KiCad E.D.A. kicad (5.1.4)-1

Rev: 1.4

Id: 2/2