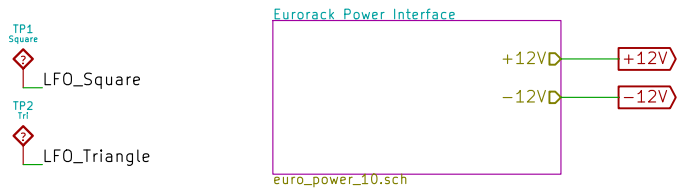
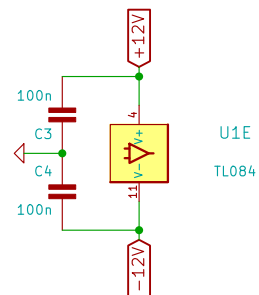
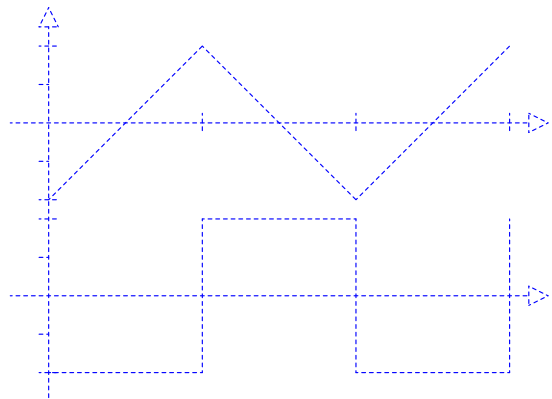
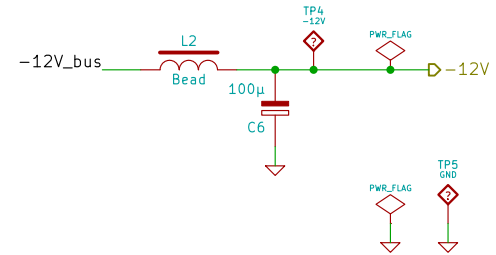
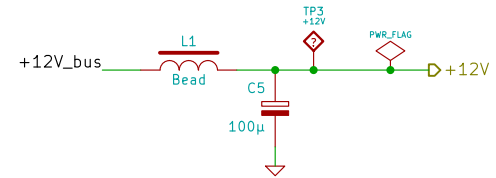
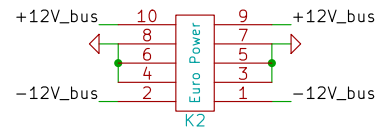


Value changes :
 R10 : 2k2
 R11 : 10k
 Attention!
 With original values:
 Parasitic oscillations will occur
 on low state output (U1C pin 8)

Powered at -12/+12 V, output will swing between approx. -10/+10 V



www.davidhailant.com		David Hailant	
File: lfo.sch		Sheet: /	
Title: Simple LFO			
Size: A4	Date: 20 nov 2015	Rev: 1.0	
KiCad E.D.A.		Id: 1/2	



www.davidhailant.com	
David Hailant	
File: euro_power_10.sch	
Sheet: /Eurorack Power Interface/	
Title:	
Size: A4	Date: 20 nov 2015
KiCad E.D.A.	Rev: Id: 2/2