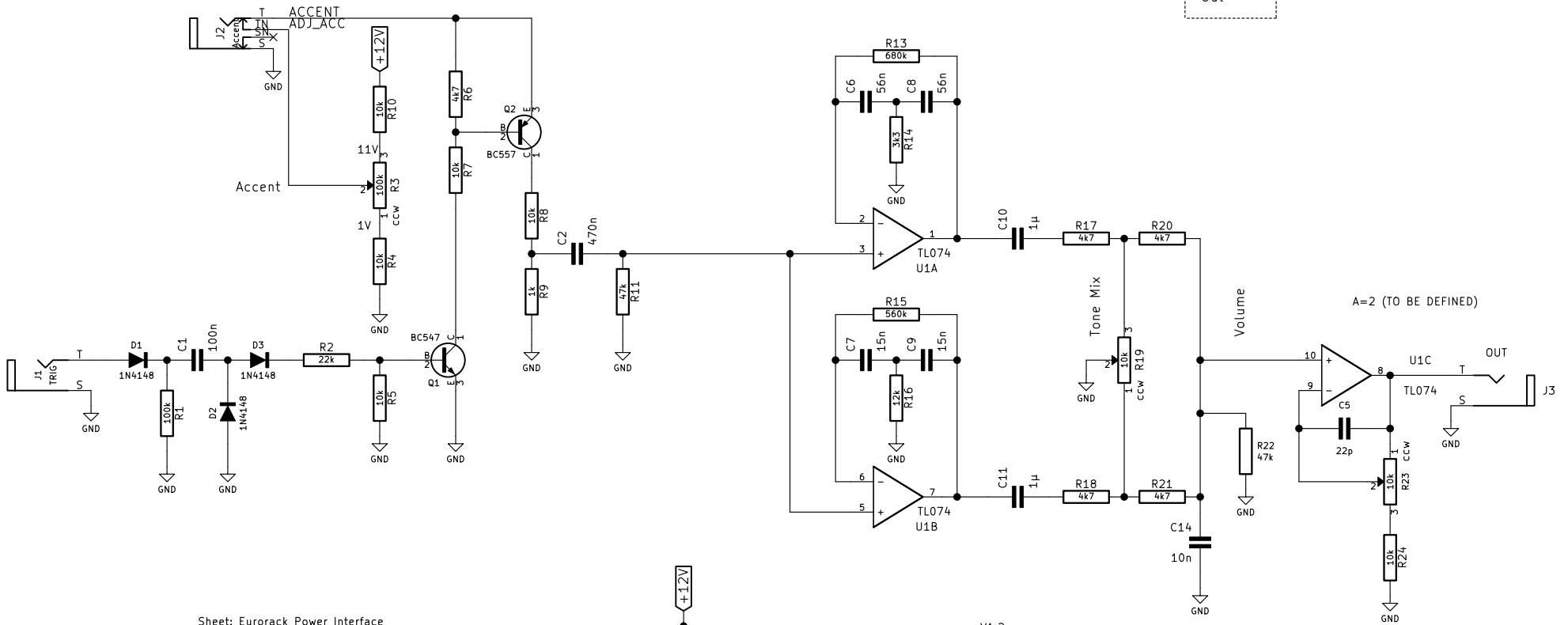
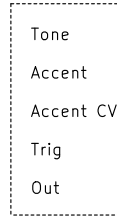
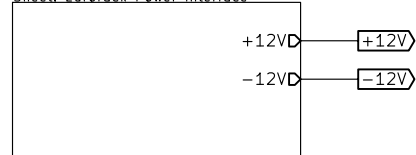


Short pin 1 and 2 if Accent CV input not used

Front Panel Layout:



Sheet: Eurorack Power Interface

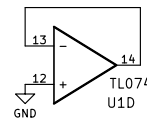
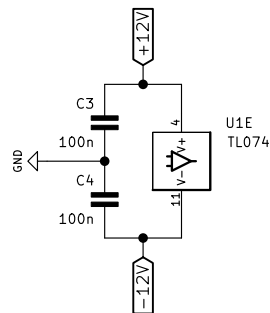


File: euro_power_10.sch

Sheet: Hardware



File: hardware.sch



- V1.2:
 * Added buffer output
 * Changed Q2 NPN to PNP as original design
 V1.3:
 * Removed R10, R12 and C5
 * Replaced R22 connector by resistor footprint

<http://www.davidhailant.com>

David Hailant

Sheet: /
 File: 606_bd.sch

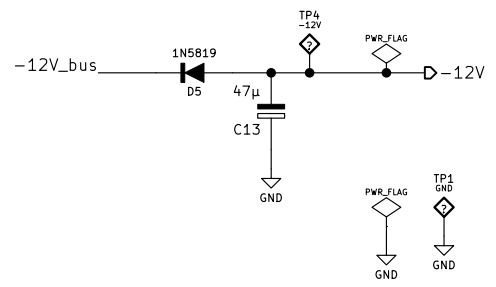
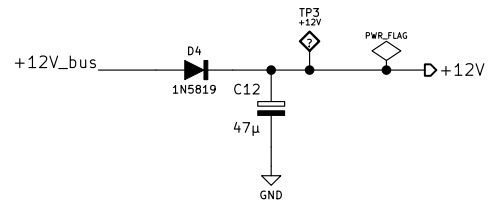
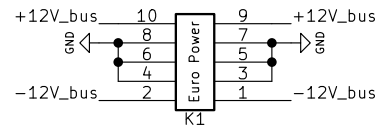
Title: 606 Bass Drum Clone

Size: A4 | Date: 2020-01-07

KiCad E.D.A. kicad 5.1.5-52549c584ubuntu16.04.1

Rev: 1.3

Id: 1/3



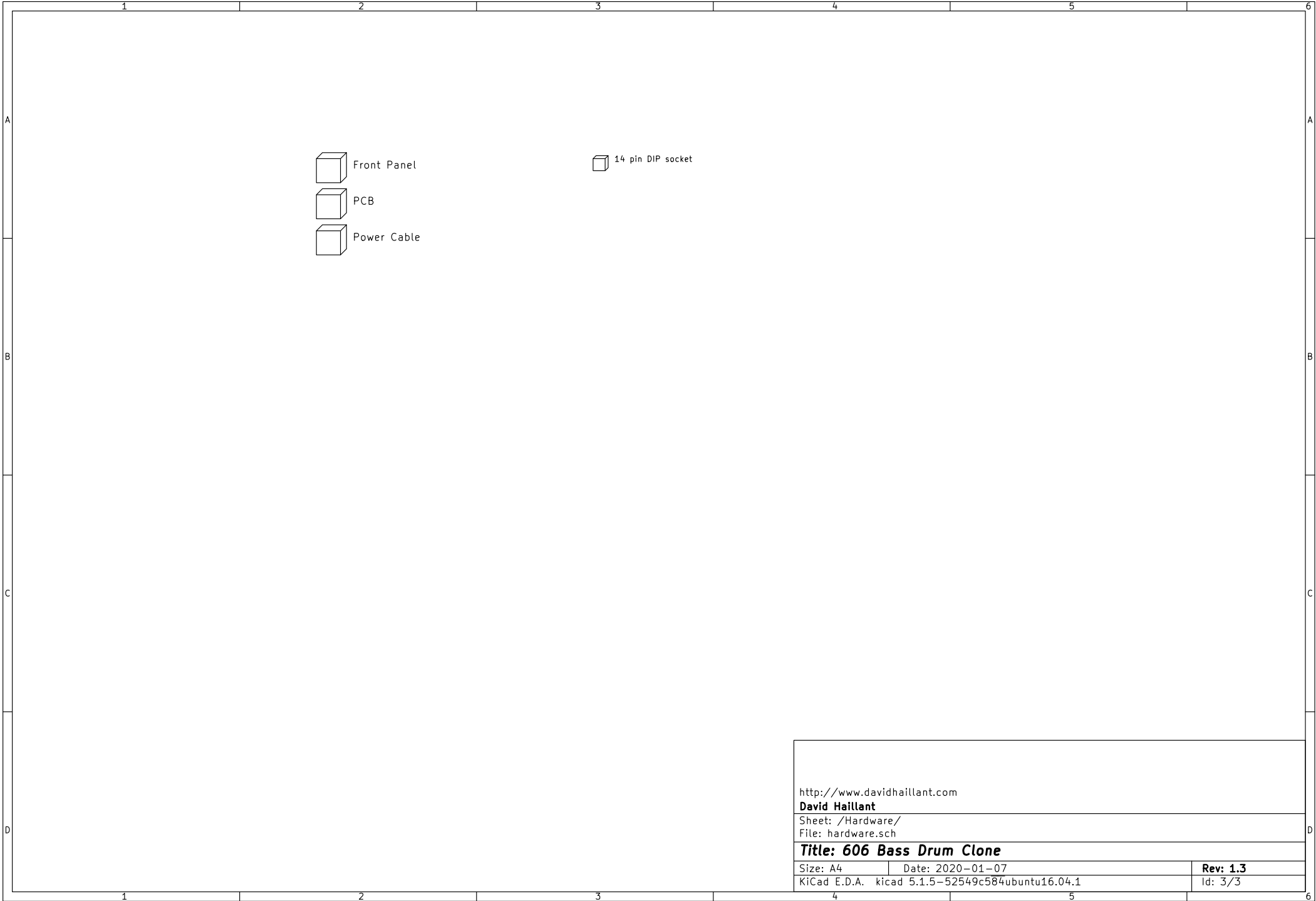
<http://www.davidhailant.com>

David Hailant

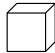
Sheet: /Eurorack Power Interface/
File: euro_power_10.sch

Title: 606 Bass Drum Clone


Size: A4	Date: 2020-01-07	Rev: 1.3
KiCad E.D.A. kicad 5.1.5-52549c584ubuntu16.04.1		Id: 2/3



 Front Panel

 PCB

 Power Cable

 14 pin DIP socket

<http://www.davidhailant.com>

David Hailant

Sheet: /Hardware/

File: hardware.sch

Title: 606 Bass Drum Clone

Size: A4

Date: 2020-01-07

Rev: 1.3

KiCad E.D.A. kicad 5.1.5-52549c584ubuntu16.04.1

Id: 3/3