

Front Panel Layout:

- Tone
- Accent
- Accent CV
- Trig
- Out

Short pin 1 and 2 if Accent CV input not used

R10, R12 and C5 can be omitted

A=2 (TO BE DEFINED)

Sheet: Euro rack Power Interface

File: euro_power_10.sch

Sheet: Hardware

File: hardware.sch

- V1.2 :
- * Added buffer output
 - * Changed Q2 NPN to PNP as original design

<http://www.davidhailant.com>

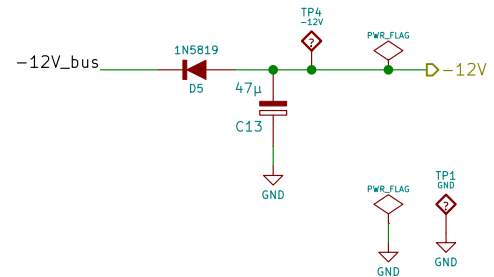
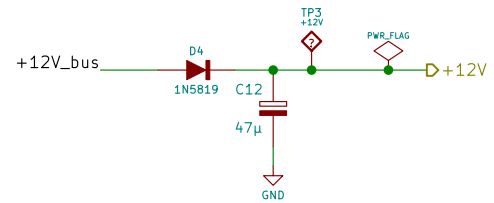
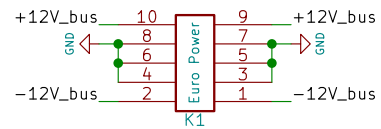
David Hailant

Sheet: /
File: 606_bd.sch

Title: 606 Bass Drum Clone

Size: A4 Date: 2019-06-03
KiCad E.D.A. kicad 5.1.4-e60b26684ubuntu16.04.1

Rev: 1.2
Id: 1/3



<http://www.davidhailant.com>

David Hailant

Sheet: /Eurorack Power Interface/

File: euro_power_10.sch

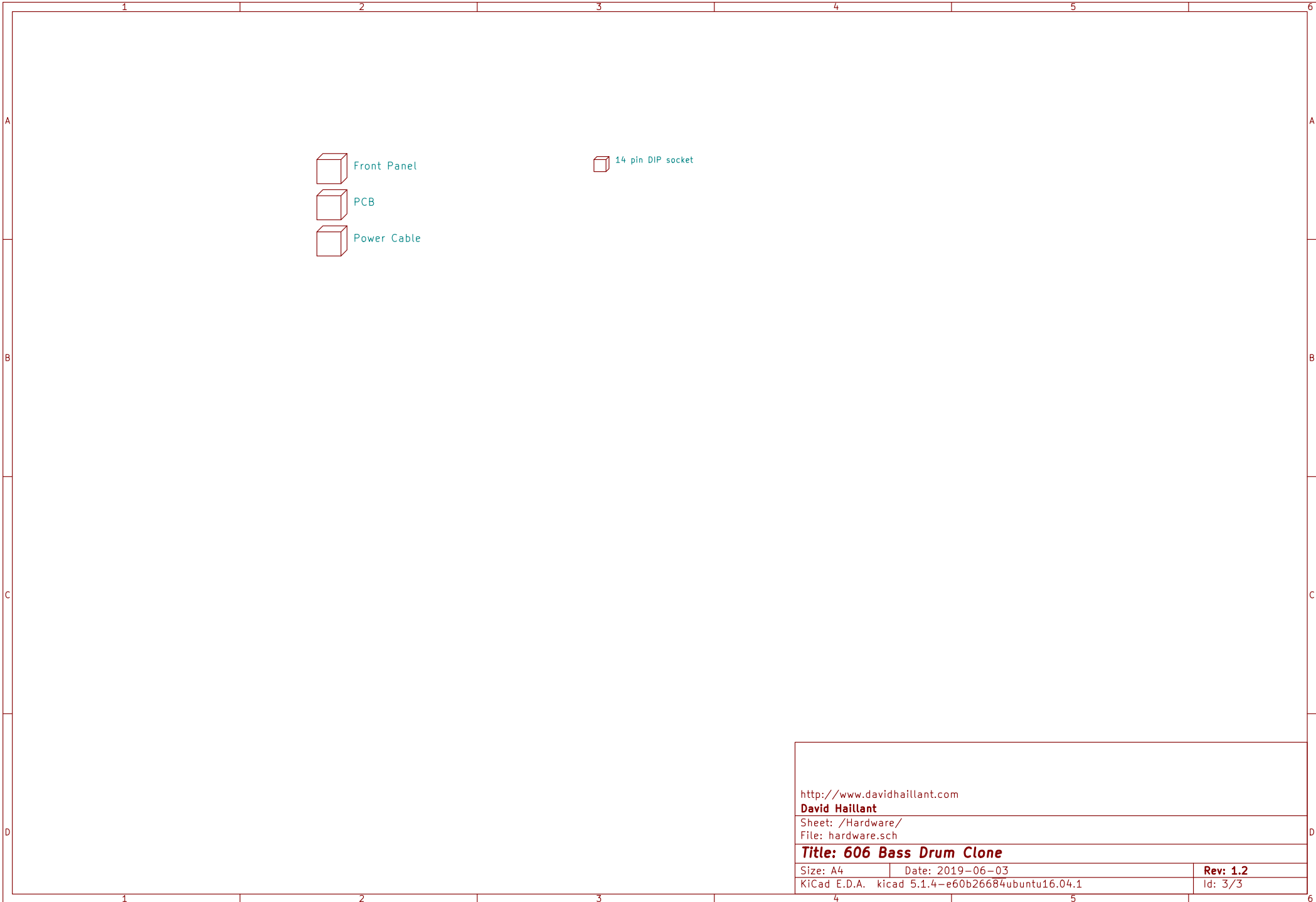
Title: 606 Bass Drum Clone

Size: A4 | Date: 2019-06-03

KiCad E.D.A. kicad 5.1.4-e60b26684ubuntu16.04.1

Rev: 1.2

Id: 2/3



Front Panel

PCB

Power Cable

14 pin DIP socket

<http://www.davidhailant.com>

David Hailant

Sheet: /Hardware/

File: hardware.sch

Title: 606 Bass Drum Clone

Size: A4

Date: 2019-06-03

Rev: 1.2

KiCad E.D.A. kicad 5.1.4-e60b26684ubuntu16.04.1

Id: 3/3