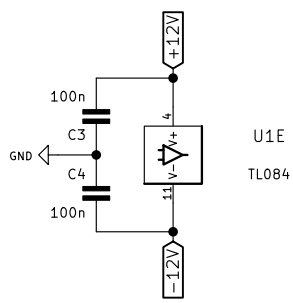
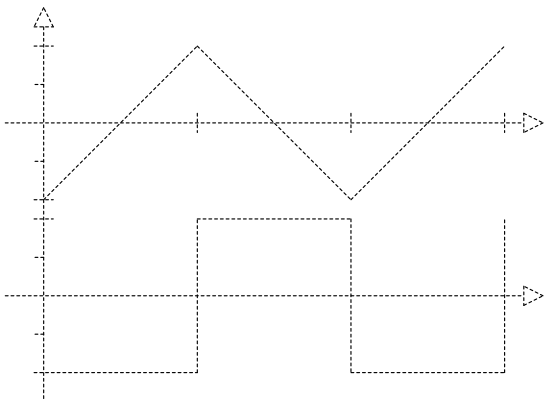
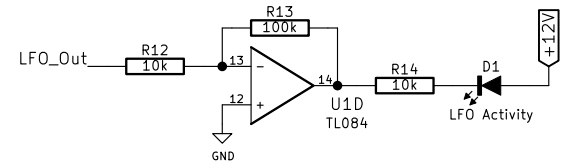
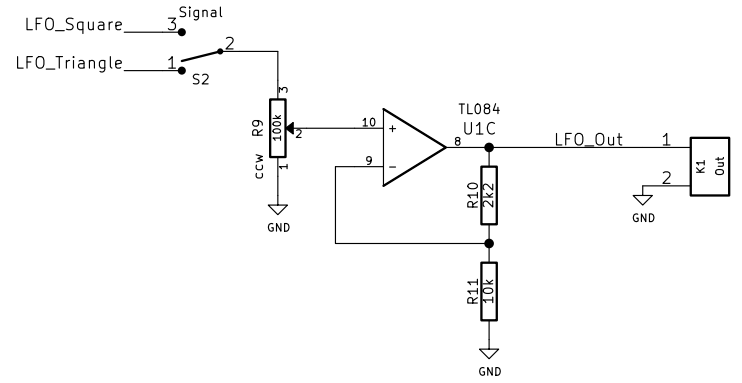

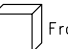
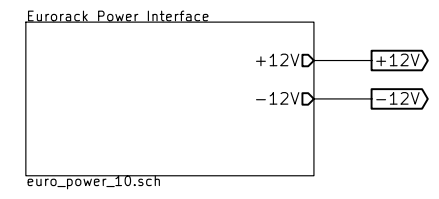
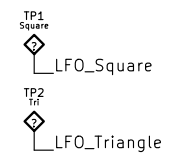


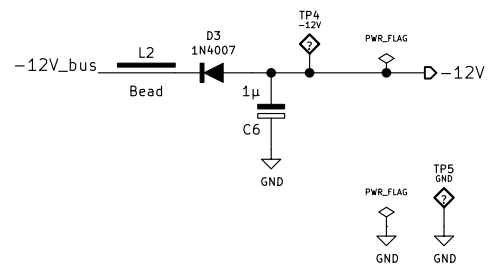
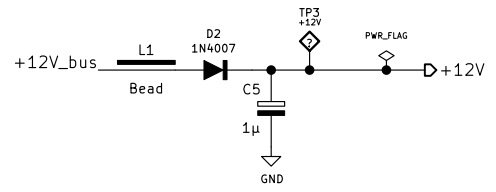
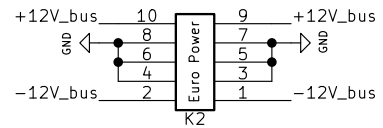
Powered at -12/+12 V, output will swing between approx. -10/+10 V



-  DIP14
-  Front panel



www.davidhailant.com	
David Hailant	
Sheet: /	
File: lfo.sch	
Title: Simple LFO	
Size: A4	Date: 2019-03-12
KiCad E.D.A. kicad 5.0.2- bcc76a070ubuntu16.04.1	Rev: 1.2
	Id: 1/2



www.davidhailant.com	
David Hailant	
Sheet: /Eurorack Power Interface/ File: euro_power_10.sch	
Title: Simple LFO	
Size: A4	Date: 2019-03-12
KiCad E.D.A. kicad 5.0.2- bee76a070ubuntu16.04.1	Rev: 1.2 Id: 2/2