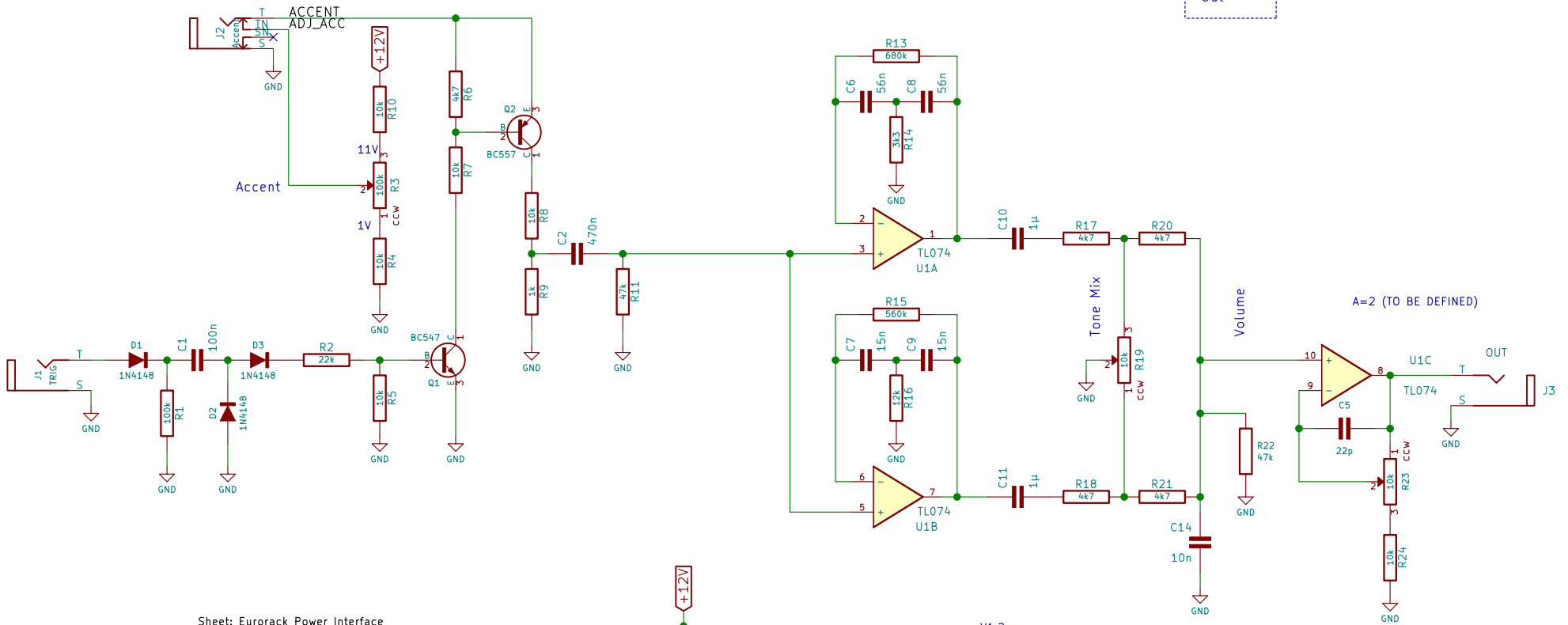
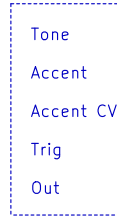
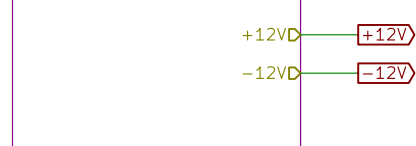


Short pin 1 and 2 if Accent CV input not used

Front Panel Layout:



Sheet: Eurorack Power Interface

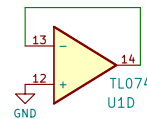
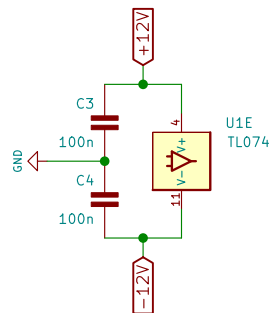


File: euro\_power\_10.sch

Sheet: Hardware



File: hardware.sch



- V1.2:  
 \* Added buffer output  
 \* Changed Q2 NPN to PNP as original design  
 V1.3:  
 \* Removed R10, R12 and C5  
 \* Replaced R22 connector by resistor footprint

<http://www.davidhailant.com>

**David Hailant**

Sheet: /  
 File: 606\_bd.sch

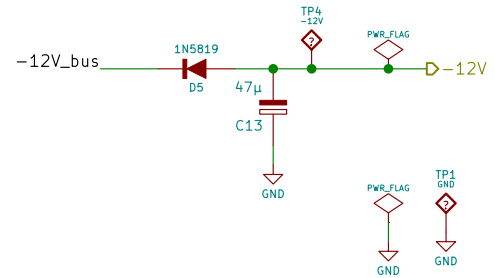
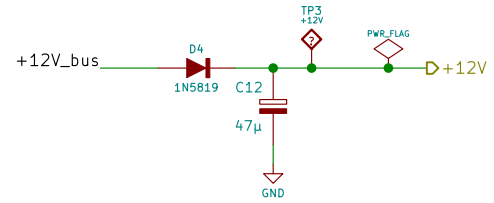
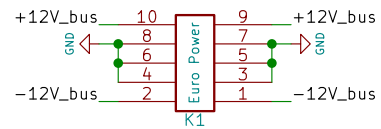
**Title: 606 Bass Drum Clone**

Size: A4 | Date: 2019-06-03

KiCad E.D.A. kicad 5.1.5-52549c584ubuntu16.04.1

**Rev: 1.2**

Id: 1/3



<http://www.davidhailant.com>

**David Hailant**

Sheet: /Eurorack Power Interface/

File: euro\_power\_10.sch

**Title: 606 Bass Drum Clone**

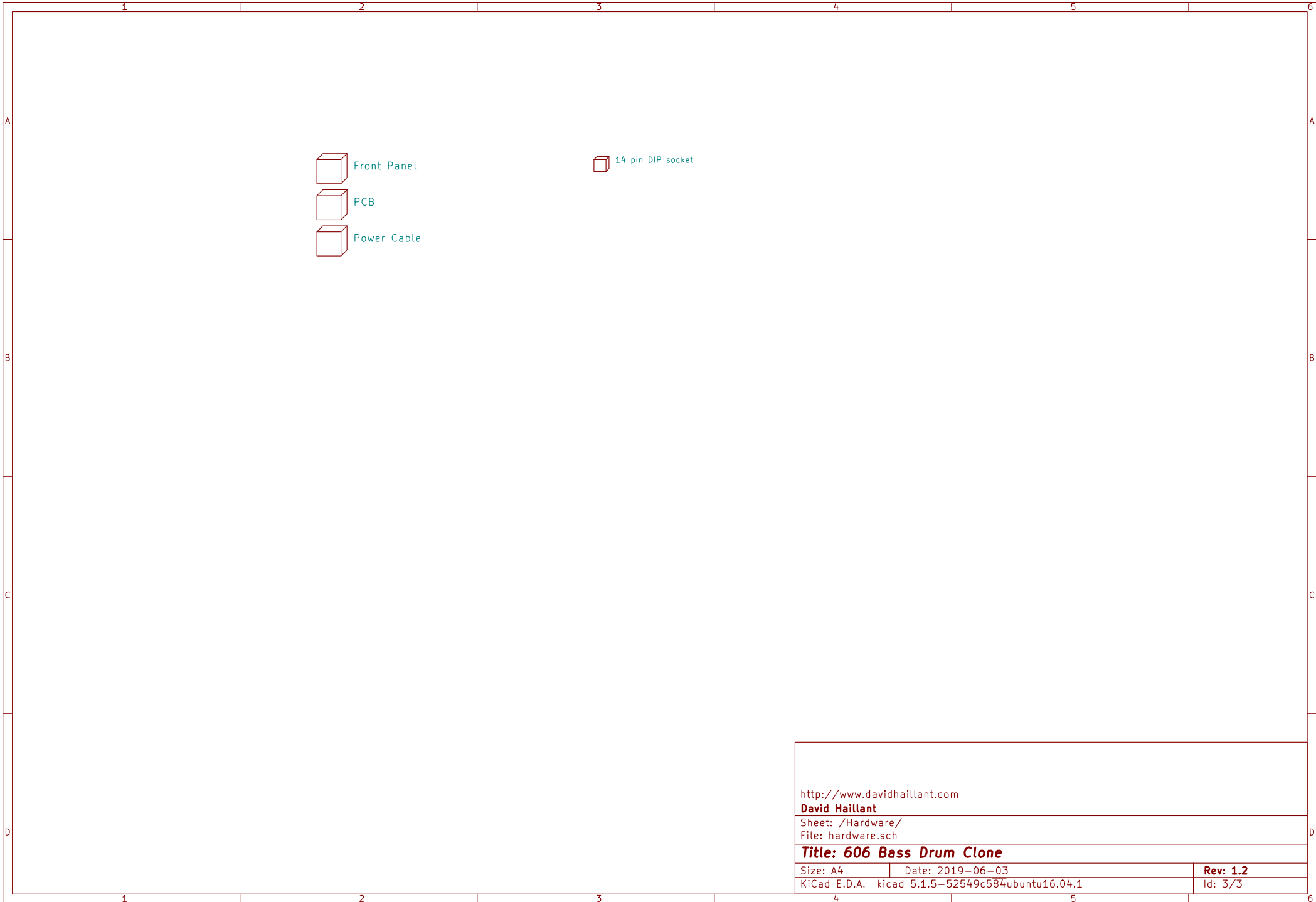
Size: A4

Date: 2019-06-03

**Rev: 1.2**

KiCad E.D.A. kicad 5.1.5-52549c584ubuntu16.04.1

Id: 2/3



<http://www.davidhailant.com>

**David Hailant**

Sheet: /Hardware/

File: hardware.sch

**Title: 606 Bass Drum Clone**

Size: A4

Date: 2019-06-03

**Rev: 1.2**

KiCad E.D.A. kicad 5.1.5-52549c584ubuntu16.04.1

Id: 3/3